

BRONX MANHATTAN BROOKLYN QUEENS STATEN ISLAND

THE NEW YORK
WOMEN'S
FOUNDATION



**YOUR
CITY
YOUR
FOUNDATION**



2012



NYWF Leadership

Board of Directors

Diana L. Taylor
Chair

Anne E. Delaney
Vice Chair

Yvonne Moore
Secretary

Susan Coté
Treasurer

Fran Barrett

Hyatt Bass
Chair, Program Committee

Taina Bien-Aimé

Kwanza R. Butler

Anita Channapati

Aiyoung Choi*

Lorraine Cortés-Vázquez

Tuhina De O'Connor*

Susan R. Cullman

Grace Hightower De Niro

Jennifer Giacobbe**

Lisa M. Holton

Robyn Brady Ince*

Antoinette E. La Belle

Carolyn Buck Luce*

Mahsa Pelosky

Michele O. Penzer**

Yvonne S. Quinn
Chair, Development Committee

Karen Reynolds Sharkey**

Janet Riccio
Chair, Communications Committee

Rossana Rosado

Jean Shafiroff**

Celeste Smith**

Regan Solmo

Abigail E. Disney
Honorary Chair

Helen LaKelly Hunt
Chair Emerita

Staff

Ana L. Oliveira
President & Chief Executive Officer

Jacqueline M. Ebanks
Vice President, Programs

Susan Fulwiler
Vice President, Development

Talatha Kiazolu-Reeves
Vice President, Operations & Strategic Learning

Carmel Owen
Vice President, Sustainability Campaign

Ruth Sarlin
Vice President, Communications

Jennifer Agmi
Program Officer

Gael Black
Communications Associate

Jillian Drummond
Program Associate

Camille Emeagwali
Program Officer

Constance Jackson
Executive Assistant to the President & CEO

Aloysee H. Jarmoszuk
Director, Institutional Philanthropy

Elliot Kipnis
Director, Development Operations

Madeline Lamour Holder
Director, Community Philanthropy

Katharine Landon
Director, Grantmaking

Shanielle Liburd
Development Associate

Debra S. Miller
Director, Administration

Christina Ramelli
Director, Individual Major Giving

Terica Mannette
Program Intern

Vivienne Peng
Communications Intern

The New York Women’s Foundation is a voice for women and a force for change. We are a cross-cultural alliance of women catalyzing partnerships and leveraging human and financial capital to achieve sustained economic security and justice for women and girls. With fierce determination, we mobilize hearts, minds and resources to create an equitable and just future for women, families and communities in New York City.

The Foundation

2
A Message from the Board Chair and the President and CEO

3
Who We Are

13
Highlights

Programs

16
Grantmaking

18
Grantee Partners

44
Partnerships for Responsive Funding

46
Management and Leadership Institute

48
Thought Leadership and Educational Outreach

54
2012: A Look Back

Supporters

64
Donors

74
Financial Statements

76
With Appreciation

A Message from the Board Chair and the President and CEO

May 9, 2013

In our 26th year, we continue to hold fast to the values of the visionary women who created The Foundation, deepening our cross-cultural alliance of women and using a participatory and engaged approach to philanthropy while, at the same time, expanding our impact to create a safer, healthier and more economically just environment for women and families in New York City.

In all these aspects, the past year was notable. An unprecedented \$5,250,000 awarded to more than 80 organizations allowed us to fund community-based solutions that provided greater safety and economic security for women and families; they also helped to provide quality health care and to promote the sexual and reproductive rights of women and girls.

The Foundation proved itself nimble and responsive to emerging crises, once again. Hurricane Sandy struck the city on October 29, 2012; within six weeks, we had established a \$1 million Hurricane Sandy Response and Recovery Fund, and allocated the first \$250,000 installment to address the loss of housing, wages and jobs that deepened the economic insecurity caused by the storm. We were heartened when one of our grantee partners wrote us, "The rain from Hurricane Sandy was still pummeling the city when an email appeared in my in-box. True to the nature of the NYWF, they were writing to assure us that we were not alone."

Human disasters also compelled a sustained response. After a two-year probe, The Foundation released its report, *Sex Trafficking of Minors in New York: Increasing Prevention and Collective Action*. Among its many disturbing findings was that on any given night, more than 4,000 underage youth in New York State are bought, sold and trafficked for sexual purposes and profit. In response, The Foundation launched a five-year, \$5,000,000 Initiative Against Sex Trafficking of Minors. Among its commitments are proposals to create a system-wide "zero tolerance" environment for the sex trafficking of minors, and to help empower communities to stop it. Zero-tolerance is also the goal of our film series against gender-based violence, launched last spring to broaden public awareness of the physical and sexual abuse of women.

The year presented challenges but moments of deep satisfaction as well. We felt enormous pride when watching Secretary of State Hillary Rodham Clinton accept our Century Award, given to a woman whose social activism has had an extraordinary and lasting impact on the lives of others. "In places around the world, it's almost unimaginable that there could be a foundation devoted to uplifting, empowering, helping, supporting and comforting women and girls as they make their journeys through life," she said in her galvanizing speech. With equal pride, we honored two other extraordinary women, Ai-jen Poo, director of the National Domestic Workers Alliance, and Merble Reagon, executive director of the Women's Center for Education and Career Advancement, as well as our remarkable grantee partners, whose ground-breaking efforts work every day to create a safer, healthier and more economically vibrant New York City.

While we have made great strides, our work is far from finished. More than 1.1 million women and children continue to live in poverty in New York City. To address the challenges to economic justice, we must work to ensure the future of The Foundation; to deepen its impact, and to broaden its influence. With your support, we can accomplish these goals and the larger one that inspired our founding: to create a brighter and economically just future for all the women and families of New York City.



A handwritten signature in blue ink that reads "Diana L. Taylor".

Diana L. Taylor
Board Chair



A handwritten signature in blue ink that reads "Ana L. Oliveira".

Ana L. Oliveira
President and CEO

YOUR CITY, YOUR FOUNDATION. THE NEW YORK WOMEN'S FOUNDATION

Women Investing in Women To Create Better Lives

Who Are We?

We are a cross-cultural alliance of women promoting economic justice for women and families in New York City.

What Is Our Purpose?

To improve the lives of women and families by funding organizations that promote the economic security of women; their right to live safely and without violence; and their health, sexual and reproductive rights.

What Are Our Values?

We are democratic, cross-cultural and women-led. We are collaborative and inclusive. We take risks, partnering with new organizations that offer ground-breaking solutions. We believe that the best solutions to the challenges communities face are often found in those communities.

“I knew we needed to expand, but I didn't know where to turn for help. And then I heard there was a Foundation that truly cared about women, and I applied for a grant. My hand was shaking when I wrote to NYWF, and it was shaking even more when I opened the envelope with the grant award. I had no idea that women who were so powerful — socially, intellectually, financially — would be willing to listen to the problems of a small, immigrant community. But we all just clicked! They told us: ‘we like your passion and energy!’ And I liked theirs! NYWF was our first funder, and then they stuck by us for years. They were like mothers gently watching a baby grow up.”

KWANGHEE KIM
KOREAN AMERICAN FAMILY SERVICE CENTER
FORMER NYWF GRANTEE PARTNER

WHAT IS OUR IMPACT?

In 26 years, more than 5.4 million women and girls living at or below the poverty line in New York City have been served by Foundation-supported organizations that promote health, safety and economic security.

Between 1987 and 2012, we have grown 100 fold. In 1987, we invested \$50,000 in four organizations; twenty-six years later in 2012, we gave more than \$5.25 million to more than 80 grantee partner organizations.

Of the 282 organizations we have funded, a full 81% are thriving and working in their communities to create safer, healthier, and more economically secure lives for women and families in New York.

We are now one of the top three women's funds in the world.

ALIGN launched the New York Caring Across Generations campaign with a Care Congress that united over 500 home care workers, seniors, people with disabilities, faith leaders, elected officials, and advocates to improve the quality of both home care and home care jobs.

WHAT WE DO

and How We Do It

We believe that the challenges women face can best be solved by women working together. Some of us have ideas; some of us have technical expertise; some of us have money; and some of us have an intimate knowledge of what it takes to make the difference, because we endure and experience it in our everyday lives. All this human capital is essential. At The Foundation, we say,

COME AS YOU ARE, BRING WHAT YOU CAN.

1.1 million
WOMEN AND GIRLS
IN NYC LIVE AT OR UNDER
THE POVERTY LINE.

OUR ORIGINS

In 1986, a small group of women recognized that only 3 percent of all philanthropic dollars were allocated to issues vital to women. That figure was particularly disturbing here in New York City, where, in the midst of extraordinary wealth, a disproportionately high number of women lived in poverty. Today, 1.1 million women and girls in NYC, or 12 percent of the population, still live at or under the poverty line. In order to find solutions to the challenges confronting women, they turned to community experts and activists. A year later, The New York Women's Foundation was born.

OUR APPROACH

Cross-Cultural Alliances Mean More Effective Solutions

From the start, we believed in educating and engaging all women. We believed in the strength of a cross-cultural alliance that was truly inclusive, where all women have a seat at the table. We believe that including all women will bring about the best results. It is this singular commitment of women investing in women to create better lives that sets The New York Women's Foundation apart from more traditional philanthropic organizations both locally and nationally.

...women investing in women
to create better lives...

“When women of different income levels and backgrounds are put into a situation in which they have to work together, they begin thinking less about differences and more about how everyone can contribute. Or they begin to see the rich differences among them as keys to great thinking and collaboration — that those differences actually expand the available pool of options and ideas. Or — at the very least — they see that they have to keep working to overcome those differences. Sure, it's a work in progress. But I have yet to see anyone do it better.”

LORRAINE CORTÉS-VÁZQUEZ,
NYWF BOARD MEMBER

Partnerships Create Strength

We value partnerships. We build partnerships with women who have resources to give, women who teach us about our neighborhoods, and women who are addressing the challenges of poverty and violence. The person who donates doesn't dictate policy any more — or less — than the grantee partner that receives it. The organizations that we fund are full and active partners, teaching us about the needs of their constituents and the most effective means of meeting them. All who sit at our table have a voice.

All women have a seat at the table.

Participants of the Westchester Square Partnership project Activating People to Pursue Lifestyle Change through Empowerment (APPLE) conducts their outreach advocacy to the South Asian community members



Problems – and Solutions – Are Found in the Same Place

We believe that the most powerful solutions arise from within the community. Every year, volunteers from our Grant Advisory Committee (GAC) visit organizations in every borough of New York City in order to identify those most likely to solve a community’s most urgent problems. These volunteers are the Foundation’s “eyes and ears.” When a prospective grantee partner’s work aligns with The Foundation’s mission, NYWF listens and partners with organizations as it crafts its solutions. This approach, unique to The Foundation, allows us to find and support effective community-driven programs.

...the most powerful solutions arise from within the community.

Taking Chances Gets Impressive Results

Often, the groups we fund are small but motivated by a powerful idea and a sense of urgency. We’re willing to take a chance on them, even when other funders are not. The results are sometimes astonishing. In 2005, we funded a fledgling group of nannies, housekeepers and caregivers fighting abuse. Now, they are Domestic Workers United, an organization representing more than 4,000 workers. In 2011, DWU helped achieve passage of the Domestic Workers Bill of Rights, the first such law in New York State. We call these catalytic investments because, as in a chemical reaction, they propel change.

Participants in BOC Network’s Childcare Means Business project are exploring the ins-and-outs of cash flow during their training in Williamsburg, Brooklyn, hosted in partnership with Nuestros Ninos



We Don’t Just Fund; We Invest

We invest in our grantee partners so they can become self-sufficient and sustainable. Through capacity building grants, we assist them with budgeting, leadership, development and other managerial functions so that they can develop into fully realized, self-reliant organizations. They are also able to draw upon the strength of our network of mutually supportive grantee partners. The results are striking: 81% of the grantee partners we have funded during our 26 years of existence are still thriving.

81%
OF THE GRANTEE
PARTNERS WE
HAVE FUNDED ARE
STILL THRIVING.

We help our grantee partners to become self-sufficient and sustainable.

Service Women's Action Network (SWAN) and Navy Veteran, Ruth Moore delivers petition signed by almost 160,000 individuals to Department of Veterans Affairs to reform VA claims process for survivors of Military Sexual Violence

The Ripple Effect of Real Change

Among our 282 grantee partners there are compelling examples of women-led, community-based groups that are leveraging their skills to effect national and sometimes even global changes. SWAN, the Service Women's Action Network, a grantee partner, was recently a plaintiff in the lawsuit that resulted in the lifting of the Combat Exclusion Ban. That change now allows women to hold combat and other positions formerly restricted to men. Sanctuary for Families, a former grantee partner, helped advise the lawmakers who designed the "Transportation for Female Genital Mutilation Act," which made it illegal for families in America to transport young women to their ancestral homes to undergo genital mutilation. Finally, Restaurant Opportunities Center (ROC), which was started by employees who lost their jobs when the World Trade Center was destroyed, received grants from 2006 through 2010 to offer employees job training as well as support in fighting sexual harassment and gender discrimination on the job. Based on their experience, they started the country's largest restaurant workers organization, which now has more than 8,000 members. And in this wider sphere, they continue to advocate for improved working conditions in the industry. In this small sampling of the great work of all our grantee partners, we act collectively to bring about changes of attitude, culture and policy in the wider society.



...we work collectively to bring about changes of attitude, culture and policy...

"The Foundation gave me the eyes to see the world. I could never have produced a film on the women of Liberia, had I not gone with NYWF to listen to the women heroes of Red Hook."

ABIGAIL DISNEY
NYWF BOARD ALUMNA
AND HONORARY CHAIR

An Activist Philanthropy Equals A Fiercely Determined One

The Foundation doesn't just want your donation; we want your time, your energy, your being. Talk to anyone who has worked with us, and you will hear that the experience, whether organizing a Neighborhood Dinner or joining the Grants Advisory Committee, is transformative. Here you will experience the power – and the beauty – of working collaboratively with other women equally fierce in their determination to improve the lives of all women and families in New York City.

"I looked around at those 2,000 strangers, all passionately caring, all finding ways to make things better," said Anne Delaney, NYWF Board Vice Chair, speaking at a recent Celebrating Women Breakfast, "and I said to myself: I've found my tribe."

Here you will experience the power – and the beauty –
of working collaboratively.

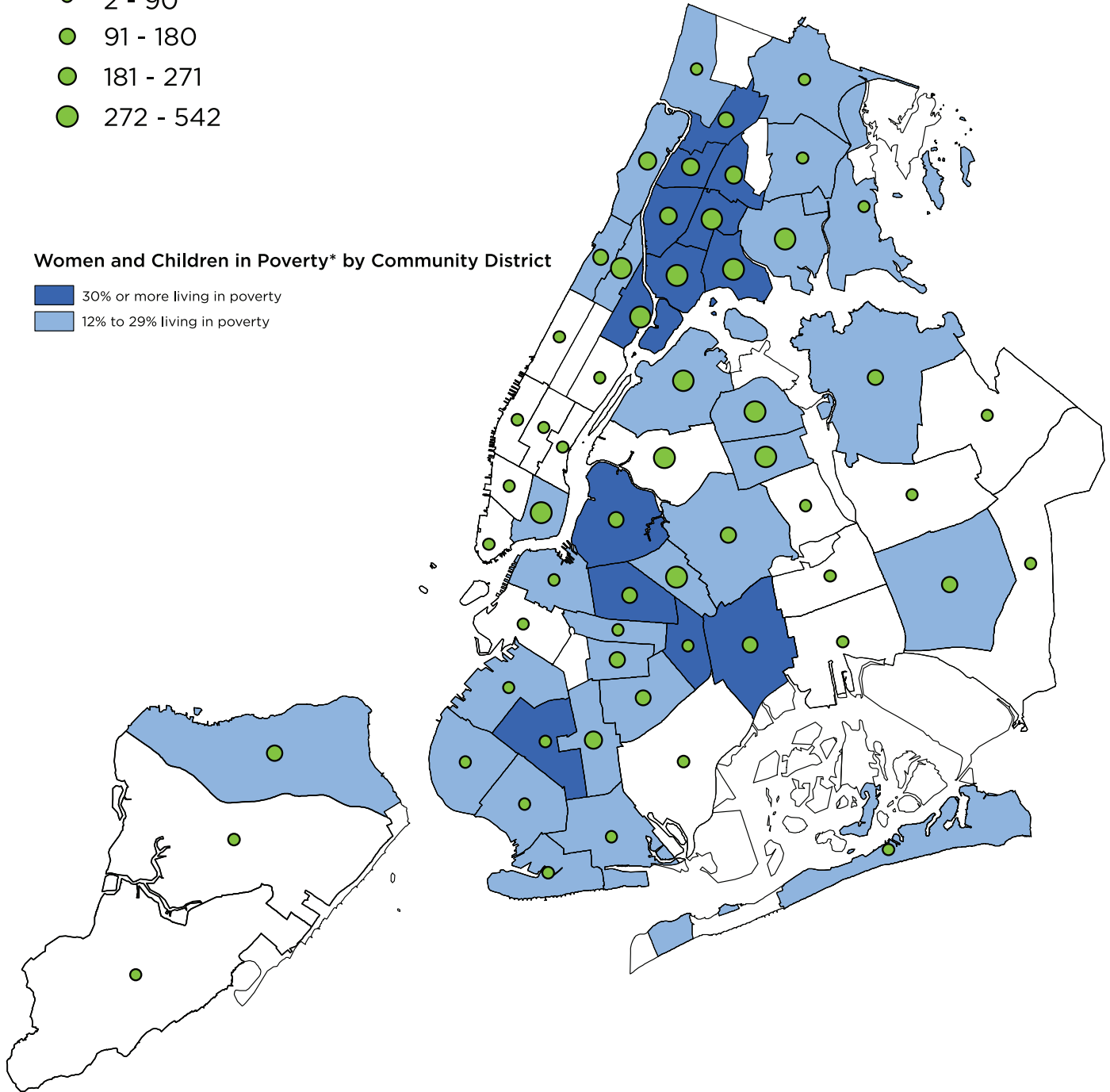
2012: REACHING WOMEN & GIRLS THROUGH GRANTEE PARTNER SOLUTIONS

Total Served by Community District

- 2 - 90
- 91 - 180
- 181 - 271
- 272 - 542

Women and Children in Poverty* by Community District

- 30% or more living in poverty
- 12% to 29% living in poverty

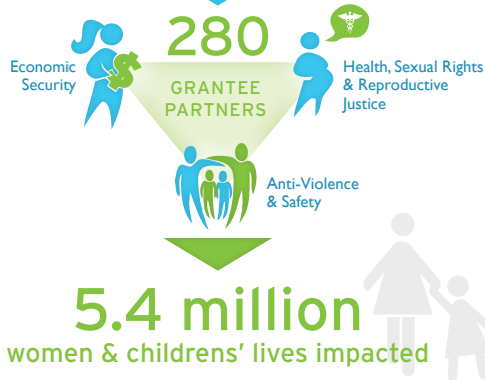


*Women and children living below 100% of the Federal Poverty Level

INVESTING FOR IMPACT

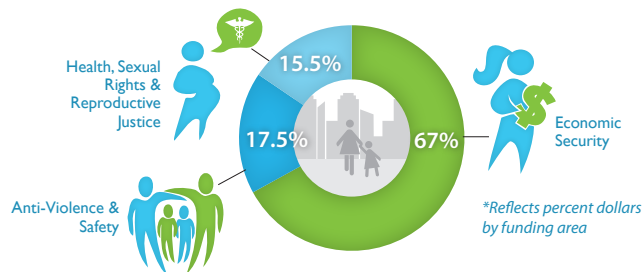
Strategic investing impacts more lives.

\$33 Million Invested
Over 25 Years



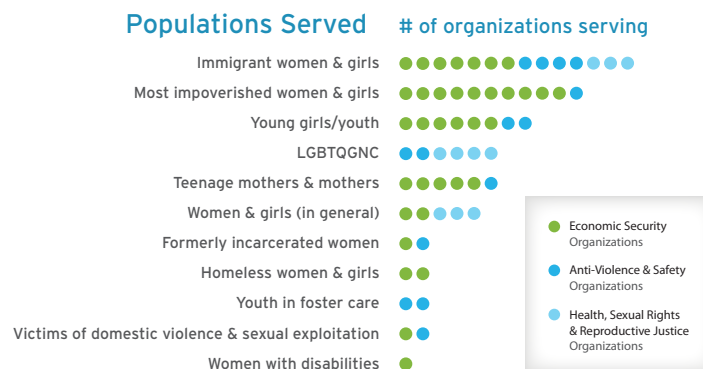
FOCUS FOR IMPACT

Focused funding builds economic security



IMPACTING THE UNDERSERVED

Our Grantee Partners address the needs of New York City's most underserved groups.



WHY WOMEN— WHY THE NEW YORK WOMEN’S FOUNDATION?

We know that women are the key to creating lasting change in the community. When you help a woman, she will uplift her family, her neighbors, and her community. **We know that for a city to thrive, all its people must thrive.**

When you give to The New York Women’s Foundation, you fund local, women-led organizations that have the knowledge and the solutions to help women improve their lives, creating stronger families, stronger communities and a better city for all of us.

Give!

The Foundation is fueled by people who give \$1 and people who give at the seven-figure level. This range of contributions is vital to our identity as a philanthropy whose fundraising is both participatory and inclusive. All of these gifts, small and large, help transform our city into a healthier, safer and more economically just New York.

WAYS TO GIVE

Become a Monthly Sustainer! Committing to The New York Women’s Foundation’s Monthly Sustainer program allows you to budget your annual giving. Contributions to this program are made automatically via credit card or payroll deduction the same time every month. As a Monthly Sustainer, you will receive special updates about what your support makes possible and a year-end summary statement for your tax records.

Support Events Our Celebrating Women® Breakfast, Fall event, and Neighborhood Dinner all provide opportunities to make a gift while strengthening The Foundation, the community and partnerships.

Matching Gifts are a powerful way to double your dollars. Ask your employer about matching gifts; many will make a donation to The Foundation when you do. This means that your donation could double or even triple. Simply enclose your company’s form along with your donation. Your company may also have a workplace giving program. The Foundation currently participates in the United Way and CUNY Workplace Giving Programs.

WAYS TO GIVE

For more information on how to participate, and on how your gift will make a difference, please contact Madeline Lamour Holder 646.564.5982 or mholder@nywf.org.

Honor Another Woman Your mother, sister, daughter, mentor or friend – or a heroine you admire....You can make a donation as a gift in honor or in memory of a person in your life. The Foundation will send a special card to your honoree acknowledging your gift, which will also support The Foundation’s work. Consider also recognizing a special person, group, or event with a tribute page in the annual Celebrating Women® Breakfast Program.

Make a Planned Gift: Join The Polly W. Guth Circle Women and men of all ages, means, and walks of life can create a legacy and commemorate their commitment to The Foundation. Gifts made through wills, retirement plans, trusts, and life insurance allow you to plan your giving for the future and provide support for future generations of women and girls. These planned gifts also may have the benefit of providing you with current and/or future income tax reductions as well as generating income for yourself or loved ones.

Get Others to Give Support the mission of The Foundation through the power of collective action. Spread the word. Visit our website: nywf.org. Add us on Facebook: www.facebook.com/NewYorkWomensFoundation. Follow us on twitter: [@NYWomensFdn](https://twitter.com/NYWomensFdn).

LEAVE A LEGACY, ASSURE THE FUTURE.

The women listed here know how important it is to ensure the future of The Foundation, and that there is no better way to do this than by making a planned gift. Planned gifts help The Foundation guarantee revenue, plan for the future and ensure the economic stability of the organization. Your planned gift will help to make sure that The Foundation will carry on with its important work for many years to come.

The Polly W. Guth Circle Members

Anonymous	Katherine S. Kahan
Miriam Buhl	Kwanghee Kim
Sarah A. Crane	Sarah Kovner
Anne E. Delaney	Antoinette E. La Belle
Kimberly E. Donaldson	Sandra A. Lamb
Martha M. Ferry	Carolyn Buck Luce
Karen A. Flischel and Kim H. Luck	Jane L. Mali
Mary E. Geisser	Gail S. Miner
Jeannie Minskoff Grant	Cynthia J. Ries
Polly W. Guth	Phyllis W. Ross
Ruth A. Leach Harnisch	

Join the Polly W. Guth Circle Planned Giving Society. For more information call Christina Ramelli at 646.564.5981.

YOUR CITY, YOUR FOUNDATION. BE THE CHANGE YOU WANT TO SEE.

The New York Women’s Foundation is run on the energy, intellect, creativity and determination of women. Lend us yours. Involvement in any of The Foundation’s committees is a rare and transformative experience and allows you to have a significant impact in the lives of women and families in New York City.

GET INVOLVED!

The Circle of Sisters for Social Change (COS) brings together socially conscious women to join their financial resources and networks to build a voice for social-change philanthropy in New York City. Members help to increase The Foundation’s visibility and to raise awareness of its impact. Through social networking, educational sessions and Foundation events, they also cultivate new members. The COS participates actively in organizing our annual Neighborhood Dinner.

The Committee For the Future (CFF) provides an opportunity for first time philanthropists to join the work of The Foundation. The CFF educates new Foundation supporters about women’s issues and about the tools they can use to help engage others in active philanthropy. Committee members plan and participate in events, help produce special projects and increase awareness of The Foundation through the Celebrating Women® Breakfast and other initiatives.

The Corporate Leadership Committee (CLC) is comprised of corporate women from diverse industries who work to increase corporate support for The Foundation and to create corporate partnerships. CLC members meet approximately once a month to devise and implement fundraising strategies. The CLC allows corporate women to participate in philanthropy at the most effective level and to demonstrate their commitment to making the city a better place for women and girls.

The Grants Advisory Committee (GAC) is at the heart of The Foundation’s participatory grantmaking. Members of the committee have two primary responsibilities: to identify potential new grantee partners and to offer recommendations on which are the most innovative and effective organizations to fund. The Foundation provides committee members with opportunities to learn more about philanthropy; challenges faced by women and girls in the five boroughs; and the organizations that provide solutions and propel change in their communities. GAC members participate in selecting grantee partners by reviewing proposals and conducting site visits.

Other Ways
to Join Us
Include:

Social media

Photography

Host an Event

Fundraising

We welcome your
talent and resources.
Let us know how
you can help!

To volunteer, please email: MHolder@NYWF.org or call 646.564.5982

NYWF HIGHLIGHTS: 1987-2012

1986 Gloria W. Milliken recruits Helen LaKelly Hunt, Joan Melber Warburg, Alice Cardona, Betty Terrell-Cruz and others to found a philanthropic organization to be run by, for, and about women.

1987 The New York Women's Foundation® is registered as a 501(c)(3) charitable organization.

1988 At the first annual Celebrating Women Breakfast, The Foundation awards grants totaling \$50,000 to 4 grantee partners.

1990 The Allocations Committee, known today as the Grants Advisory Committee (GAC) is created.

1993 The Foundation inaugurates the annual Neighborhood Dinner in Chinatown to celebrate community leaders.

1997 23 grantee partners receive over \$500,000.

1999 The Committee for the Future is launched to introduce younger women to The Foundation.

2000 Board alumna Sara Lee Schupf underwrites the new Management & Leadership Institute.

The first Century Award, awarded to **Elinor Guggenheimer** at the Celebrating Women Breakfast, honors a woman whose significant achievements have influenced the lives of — and provided a role model for — women and girls.

2001 9/11 Disaster Relief Fund raises and distributes nearly \$700,000 to support nonprofits working with women.

2002 NYWF Founder **Gloria W. Milliken** is presented with **The Century Award** at the CWB.

2005 Nobel Laureate **Dr. Wangari Maathai** is given **The Century Award** at the CWB.

2006 Over 50 grantee partners are awarded \$1.65 million.

The Foundation launches the Circle of Sisters for Social Change to enable socially conscious women to harness their resources and networks to support social change philanthropy in New York City.

2007 **Abigail E. Disney** makes a \$1 million challenge, "I Declare My Interdependence" at the Celebrating Women® Breakfast, raising an additional \$1.6 million.

NYWF honors **Dolores C. Huerta** with **The Century Award** at the 20th annual CWB.

2008 The Foundation's first-ever evening Gala honors women and men for their commitment to New York City.

The Foundation publishes *The Economic Status of Women in New York State* report.

2009 RISE-NYC! (Respond, Inspire, Solve, Engage) partnership launched in response to the recession, increasing grantmaking 20%.

2011 The Foundation awards \$4 million to 77 grantee partner organizations.

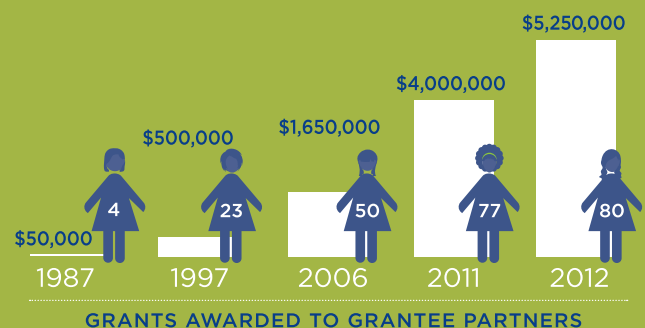
NYWF releases its first gender budget analysis report, *A Harder Struggle, Fewer Opportunities*.

2012 The Initiative Against Sex Trafficking of Minors is launched with the release of *Sex Trafficking of Minors in New York: Increasing Prevention and Collective Action* report.

Hillary Rodham Clinton, Former Secretary of State, is honored with **The Century Award** at the CWB.

The Foundation awards an unprecedented \$5.25 million to 80 grantee partners.

NYWF launches Hurricane Sandy Response and Recovery Fund, which will award \$1 million over 4 years to those most impacted by the storm.



The New York Women's Foundation Board Alumnae

Your leadership and commitment to The New York Women's Foundation are unparalleled in philanthropy. The cross-cultural alliances and partnerships you have fostered have informed our mission and fueled our success. **AS ALWAYS, WE ARE GRATEFUL FOR ALL THAT YOU HAVE DONE.**

Natalie Abatemarco	Jane A. Freeman	Sarah Kovner	Lucille C. Renwick
Suzanne Ainslie	Cindy Fukui-Gim	Wei Lam	Yolanda Rivera
Nereida S. Andino	Arlyn S. Gardner	Sandra A. Lamb	Barbara B. Roberts
Carole Angermeir	Selena Gardner	Nancy Lebron	Maria Teresa Rojas
Betty D. Arce	Cecilia M. Gastón	Hali Lee	A. Stacey Rouse
Maria Arias	Mary E. Geisser	Josephine Linden	Yolanda Sanchez*
Wendy A. Bach	Traci M. Gibson	Margaret Munzer Loeb	Sheri C. Sandler
Didi Barrett	Leslie Gimbel	Carolyn Buck Luce	Heidi L. Schneider
Brooke S. Beardlee	Susan Ginkel	Melanie Lyons	Sara L. Schupf
Judith Roth Berkowitz	Eloisa Gordon	Jean Mahoney	Marian L. Schwarz
Martha D. Bernstein	Jeannie Minskoff Grant	Idelisse Malave	Mary Carroll Scott
Sayu V. Bhojwani	Lynda D. Gray	Nell Martin	Elinor A. Seevak
Gloria Primm Brown	Verona Greenland	Rhonda Joy McLean	Maria E. Semidei-Otero
Marjorie A. Cadogan	Audrey Gruss	Anne Mendel	Purvi Shah
Alice Cardona*	Janet T. Gusman	Friedrike Merck	Anne Sheffield
Shona Chakravartty	Polly W. Guth	Gerri W. Merrick	Ann Short
Millie Chan	Judith L. Hall	Gloria W. Milliken*	Barbara Smith
Linda T. Chard	Anne Hartwell	Gail S. Miner	Connie Solomon*
Aiyoung Choi	Katharine R. Henderson	Mary C. Mitchell	Brande Stellings
Josephine M. Clement	Carolyn D. Hermogenes	Elba I. Montalvo	Margaret L. Stevens
Roxanne Coady	Laura M. Schachter Hertzog	Elisabeth Luce Moore*	Carmen S. Suardy
Berta L. Colón	Adria S. Hillman	Katharine Mountcastle	Betty Terrell-Cruz
Olivia H. Cousins	Madeline L. Holder	Sondra Murphy	Myra Leigh Tobin
Sarah A. Crane*	Elizabeth C. Houghteling	Stacia Murphy	Christina Toosie
Stacey Cumberbatch	Carole Hunt	Sharon A. Myrie	Catherine Tracy
Judith Daniels	Helen LaKelly Hunt	Brenda Neal	Mary Jean Tully*
Anne S. Davidson	Audrey M. Hutchinson	Sheila Nemazee	Lola Van Wagenen
Susan L. Davis	Robyn Brady Ince	Laura J. Nurse	Amy Vance*
Virginia Day	Nancy Roosevelt Ireland	Tuhina De O'Connor	Helen Vanderbilt*
Keiko I. DeLille	Weslie R. Janeway	Susan J. Onuma	Barbara Manfrey Vogelstein
Abigail E. Disney	Virginia R. Joffe	Silda Palerm	Sukey N. Wagner
Evan Donaldson*	Janice M. Johnson	Jane Pauley	Myrle H. Wall
Kimberly E. Donaldson	Anne B. Jones	Janice Perlman	Joan M. Warburg
Nancy M. Dorsinville	Katherine S. Kahan	Carroll Petrie	Charlotte C. Weber
Nicky M. Edlich*	Marion S. Kaplan	Lili Pew-Montfort	Sandra Weiksner
Patricia Eng	Edith Kelly*	Karen A. Phillips	Kathryn Weill
Somers W. Farkas	Jessie McClintock Kelly	Lisa L. Philp	Patricia A. White
Elizabeth Fernandez	Jean B. Kilborne	Rosemonde Pierre-Louis	Dee Winokur
Martha M. Ferry	Grace K. Kim	Suki T. Ports	Barbara Brizzi Wynne
Julie Fontaine	Kwanghee Kim	Linda E. Rappaport	Barrie Zesiger

IN MEMORIAM 2011-2012

Alice Cardona

Nicki M. Edlich

Gloria W. Milliken

Yolanda Sanchez

The Foundation celebrates their life contributions. We will cherish their memory and rich legacy to our mission.

OUR FOUNDERS

“Never doubt that a small group of thoughtful, committed citizens can change the world. Indeed, it is the only thing that ever has.”

MARGARET MEAD

In 1986, a small group of thoughtful, committed women were determined to address the challenges faced by underserved women and girls in New York City. The following year, they created what had never existed in New York City: an activist philanthropy run by a cross-cultural alliance of women invested in social change. Today, the lives of 5.4 million women and girls are healthier, safer and more economically secure because of these visionary, committed women. We honor them.

Gloria Primm Brown
Carol Bundy
Alice Cardona*
Anne S. Davidson
Virginia Day
Evan Donaldson*
Cindy Fukui Gim
Anne Hartwell
Adria S. Hillman
Helen LaKelly Hunt
Marion S. Kaplan
Sarah Kovner
Idelisse Malave
Anne Mendel
Gloria W. Milliken*
Elisabeth Luce Moore*
Katharine Mountcastle
Sondra Murphy
Stacia Murphy
Brenda Neal
Janice Perlman
Yolanda Sanchez*
Anne Sheffield
Connie Solomon*
Margaret L. Stevens
Linda Tarry
Betty Terrell-Cruz
Myra Leigh Tobin
Cristine Toosie
Mary Jean Tully*
Amy Vance*
Helen Vanderbilt*
Lola Van Wagenen
Joan M. Warburg
Charlotte C. Weber
Kathryn Weill

*deceased

THANK YOU FOR YOUR COMMITMENT

“Service is the rent each of us pays for living, the very purpose of life and not something you do in your spare time or after you have reached your personal goals.”

MARIAN WRIGHT EDELMAN

The New York Women’s Foundation thanks its departing board members for their service, courage, their knowledge and their dedication to improving the lives of women and families in New York City. They did not wait for someone else to take up the challenge; they took it up themselves and in fulfilling what Edelman calls the very purpose of life, they created a stronger Foundation and a safer, healthier and more humane New York.

We honor them and we thank them.

Aiyoung Choi

Tuhina De O’Connor

Robyn Brady Ince

Carolyn Buck Luce

Grameen America member, Florentina, sells specialty gifts and apparel out of a storefront in Brooklyn



GRANTMAKING

Investing to Create Better Lives

The New York Women's Foundation invests in improving the lives of women and families through grants to innovative and effective, women-led, community-based organizations; partnerships with national and local institutions who support our goals; initiatives that provide management and leadership training; and public education and outreach on issues vital to the lives of women, girls and families in New York City.

HOW WE GRANT FUNDS

Is As Important As How We Raise Them

“Once NYWF got it, they really got it. They became amazing supporters, not just of SRLP, but of the larger movement of social, economic and gender liberation. They immediately understood that we can’t do it alone....That ability to listen, to learn, to entertain new ideas, to take those views to their logical conclusion is the hallmark of The Foundation – and its greatest strength.”

**POOJA GEHI, DIRECTOR OF LITIGATION
FOR SYLVIA RIVERA LAW PROJECT,
FORMER GRANTEE PARTNER**

What We Know

Women’s lives are complex. Their health, economic well-being and sexual and reproductive freedom are all inextricably linked. We therefore invest to remove barriers and create opportunities in each of these areas: economic security; safety and anti-violence; and health, sexual rights and reproductive justice.

The organizations that we fund are women-led and community-based, reflecting our belief that the problems and the solutions are found in the same place.

They also promote change, addressing challenges at the root and altering policies and beliefs in the process. As NYWF President and CEO Ana Oliveira said, “We have been on a steady path of transforming women’s philanthropy from an act of charity to a highly participatory and broadly influential engine for social change.” We think of our work as investing in experts, not donating to victims.

Finally, they are our partners. The Foundation and its grantee partners collaborate, pooling resources to achieve both results and dignity.

We invest to remove barriers and create opportunities.

How We Do It

Our grantmaking is principally carried out by volunteers through our Grants Advisory Committees (GAC). Trained by The Foundation in philanthropy and activism, each grantmaking cycle, 40-50 volunteers conduct site visits in each of the five boroughs to organizations that have applied for funding.


The process is transformative for both the community organizations and the volunteer activists. Organizations praise the grant application process as a thoughtful exercise in self examination that flags weaknesses and leads to improvements, while volunteers speak movingly of the knowledge they have acquired and the indelible experience of being “part of the change they wish to see.”

“I didn’t just want to write a check. I wanted a deeper experience. I wanted to be involved at that level. The GAC is so unique, and is so uniquely valued not only by its members but by the organizations that the GAC visits. Again and again, the grantee partners with whom we met said The New York Women’s Foundation was the only grant maker whose site visits they truly looked forward to. It is wonderful to be part of something so innovative and so tremendously effective.”

HYATT BASS, NYWF BOARD MEMBER

Our Partners

Throughout our 26 years, The Foundation has funded a vibrant, energetic network of some 282 past and present grantee partners. Those with similar goals share ideas and information and support each other’s work, adding to their collective impact. Individually, each run programs that are as rich and as varied as the communities from which they spring. The pages that follow offer a profile of The Foundation’s current grantee partners.

A photograph of two women on a busy city street. The woman on the left has long dark hair and is wearing a bright green long-sleeved top. She is holding a silver flip phone up to her mouth as if recording a voice message. The woman on the right has curly dark hair and is wearing a dark grey hoodie over a white shirt. She is holding a purple smartphone and looking towards the camera. The background is a blurred city street with various signs and buildings.

Women who have reported their stories of street harassment through Hollaback's iPhone and Droid apps demonstrate how to "Hollaback" in New York City

ANTI-VIOLENCE & SAFETY

All women have the right to live safely. The programs we support address the immediate needs of women and girls who suffer physical, emotional and sexual abuse. They also attack root causes and work to create lasting changes in institutions and beliefs that perpetuate gender-based violence.



New York City Gay and Lesbian Anti-Violence Project (AVP) conducted outreach, helped provide community security, and co-sponsored the Trans Day of Action 2012. Here, participants begin marching out of Washington Square Park

**New York City
Gay and Lesbian
Anti-Violence Project**
LGBTQ Community-Based
Violence Prevention Program
Citywide | \$50,000

Established in 1980, New York City Gay and Lesbian Anti-Violence Project (AVP) serves the Lesbian, Gay, Bisexual, Transgender, and Queer (LGBTQ) and HIV-affected communities through direct services including on-site, borough-specific crisis intervention, safety planning, counseling, advocacy, and accompaniment as well as community organizing work that includes outreach, raising awareness, and information distribution. The LGBTQ Community-Based Violence Prevention Program provides targeted outreach, intake and supports to Transgender and Gender Nonconforming People-of-Color facing daily and severe levels of hate, domestic and sexual violence, and also organizes them to create strategies to end the violence they experience.

A Storyteller Uses Memory to Empower Others

Jennifer is a 34-year-old transgender-identified woman who now lives in supportive housing in the Bronx after several years of homelessness. She contacted AVP after an incident at a Manhattan McDonald's where she experienced anti-LGBTQ violence. After working with one of their counselors to receive supportive services, Jennifer realized that AVP's mission closely aligned with her own, and decided to engage in more community organizing and advocacy work with the organization.

She joined the Speaker's Bureau, which is AVP's public speaking program for lesbian, gay, bisexual, transgender, queer and HIV-affected survivors of violence. The activities in the Speaker's Bureau brought up old memories for Jennifer, and she realized that a lot of the bullying and violence that she had experienced as a young person in school directly impacted the ways that she handled the more recent incidents of violence. Part of her story began with being attacked by 42 other young people at once – and her mother looking on, unable to intervene. This led to the recent past, when she was homeless and struggling to feel empowered through her trans feminine identity – themes she has used when connecting with audiences as a member of the Bureau.

In addition to public speaking, Jennifer also began conducting outreach for AVP, focusing mainly on reaching other transgender and gender nonconforming community members. Through this organizing, Jennifer has been able to continue her journey for stability and empowerment. In addition to her leadership at AVP, Jennifer is also involved with Housing Works, and United Methodist Women at the Church of the Village, where she has encouraged her peers to expand their knowledge about LGBTQ violence, including hate and intimate partner violence. She is driven, she has said, not only by the story of herself that emerged at AVP, but the voices of her fellow survivors and allies that she has met here.

The Arab-American Family Support Center

The Manar Project
Citywide | \$60,000

The Arab-American Family Support Center (AAFSC), founded in 1994, is the first and largest Arabic-speaking social services agency in the city. AAFSC is the only organization in New York that provides services for victims of domestic violence, sexual assault, sex trafficking and sexual exploitation within the Arab-American and Arab immigrant communities. Given the difficulty of discussing sexual violence and abuse in this community, as well as the underlying issue of honor-based violence, AAFSC offers a better entry into this under-served community than broader organizations. As such, AAFSC works broadly with women and girls on issues of domestic violence, sexual abuse, sexual exploitation, forced marriage and trafficking. It also works within families to open up dialogue around these secret issues, and within the community, including doing outreach to local churches and mosques, to change cultural norms and address issues of violence, exploitation and women's rights.

Funded through The New York Women's Foundation's Initiative Against Sex Trafficking of Minors.

Association of the Bar of the City of New York Fund, Inc. (City Bar Justice Center)

Trafficking and Empowerment Program
Citywide | \$80,000

The City Bar Justice Center operates as a not-for-profit, legal services division of the Association of the Bar of the City of New York Fund, Inc. (City Bar Fund), the nonprofit affiliate of the New York City Bar Association (City Bar). The City Bar Justice Center seeks to address the

legal issues facing youth trafficked for sex that often create concrete barriers to integration/re-integration into society and advancement. These issues, such as immigration status, access to benefits, lack of identification documents, and criminal cases, often prevent youth, once identified, from exiting "the life." Through the Trafficking and Empowerment Program, The City Bar Justice Center aims to increase legal education and representation for one of the most invisible and vulnerable populations — youth trafficked for sex. In addition, they bring tremendous legal resources to trafficked youth in the communities where they are located and help ensure that these youth regain their lives.

Funded through The New York Women's Foundation's Initiative Against Sex Trafficking of Minors.

CONNECT

Citywide | \$50,000

CONNECT was founded by several veterans of the domestic violence movement to meet the ongoing need for direct services that respond to the crises caused by domestic violence, in a way that ensures that violence against women and girls will ultimately be eradicated. CONNECT builds partnerships with individuals and communities to address interpersonal violence and gender justice, and change the beliefs, behaviors and institutions that perpetuate violence. Through legal empowerment, grassroots mobilization, and transformative education, the organization seeks to create safe families and peaceful communities.

Council of Senior Centers & Services

Elder Abuse Initiative
Citywide | \$75,000

Founded in 1979, the Council of Senior Centers & Services of NYC (CSCS) is recognized as the lead NYC-based organization representing senior services and aging issues. CSCS's Elder Abuse Initiative combats elder abuse in New York City by: 1) Creating recommended protocols for intake referral of elder abuse cases; 2) Standardizing the reporting of elder abuse cases and improved treatment of elder abuse victims; 3) Drafting and implementing regulatory reform within the banking industry; 4) Advocating for the base lining of elder abuse program funds in the New York City budget; and 5) Expanding the Activators Corps, a group of older adults trained to educate their peers on elder abuse prevention and to reach out to elder abuse victims.

Equality Now

Engaging Communities to End Trafficking
Citywide | \$80,000

Founded in 1992, Equality Now is an international human rights advocacy organization whose mission is to achieve legal and systemic change that addresses violence and discrimination against women and girls around the world. The Engaging Communities to End Trafficking program seeks to create a 'zero tolerance' environment for sex trafficking and the commercial sexual exploitation of children by combining legal advocacy with awareness-raising to promote justice and equality for women and girls. Through legislative reform of New York's anti-trafficking laws as well as the awareness raising campaign, Equality Now will

increase services for child victims of trafficking, provide a greater awareness to legislators, law enforcement and the general public and improve the way New York as a whole addresses the sex trafficking of minors.

Funded through The New York Women's Foundation's Initiative Against Sex Trafficking of Minors.

Families for Freedom

The Bronx, Brooklyn, Manhattan, Queens | \$60,000

Families for Freedom (FFF) was formed to respond to the increase of family separation and deportations caused by the drastic overhaul of immigration laws in 1996 and the increase in detention and suspicion of immigrants of color post-September 11th. FFF works to educate, support, and organize families directly affected by deportation in order to change unjust laws and their devastating effects on families and communities. FFF seeks to build the capacity of low-income families of color who are disproportionately targeted by the criminal justice and deportation systems to fight back by: expanding defensive education work to additional NYC communities; training affected women as grassroots educators/mobilizers; and organizing at-risk individuals and communities to mount a campaign to halt the increasing criminalization of immigrants.

Girls Educational and Mentoring Services (GEMS)

Support Services for Commercially Exploited and Domestically Trafficked Girls and Young Women
Citywide | \$80,000

In operation for more than 14 years, GEMS is the only organization in New York State specifically designed to serve girls and young women who have experienced commercial sexual exploitation and domestic trafficking. As a survivor-led agency, GEMS understands how commercial sexual exploitation is intrinsically linked to racism, poverty, gender-based violence, and the criminalization of youth. The aim of GEMS's long-term Support Services for Commercially Exploited and Domestically Trafficked Girls and Young Women is to empower girls and young women to exit the commercial sex industry and develop to their full potential. The program fosters individual transformation, community engagement and mobilization, and systemic change.

Funded through The New York Women's Foundation's Initiative Against Sex Trafficking of Minors.



Hetrick-Martin Institute

Anti-Violence Social Media Campaign
Citywide | \$50,000

Hetrick-Martin Institute is among the nation's oldest nonprofit agencies serving the lesbian, gay, bi-sexual, transgender and queer community, with over 30 years operating experience providing mental health and supportive services to at-risk youth regardless of their sexual orientation or identity. The Institute's Anti-Violence Social Campaign is a year-long, youth led social media initiative designed to address violence against young lesbians, queer-identified women, and trans women, and to educate other community-based organizations about violence facing young women and what can be done to remedy the issues.

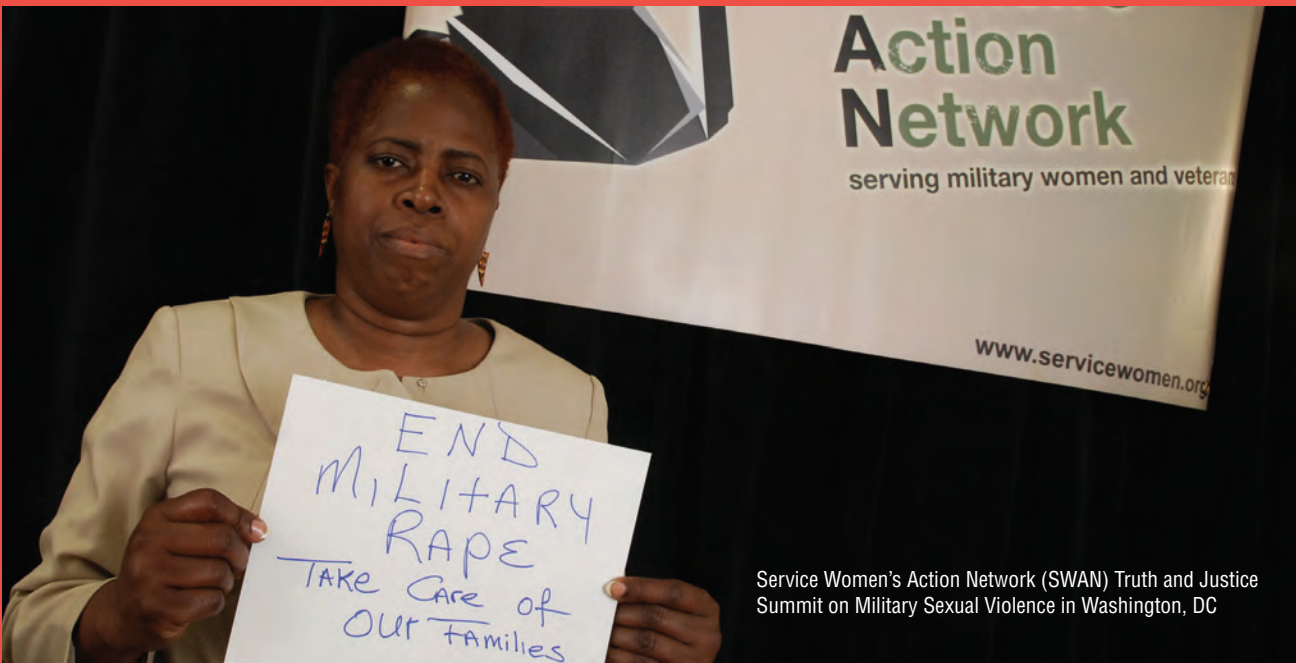
Hollaback!

New York City Program
Citywide | \$50,000

Hollaback!'s mission is to improve public safety for women and LGBTQ individuals by ending street harassment and assault. Started as a simple blog project in 2005 to collect every day stories of street harassment, it has since turned into an international movement with people telling their stories of harassment through their iPhone, Droid app, and websites. Hollaback! NYC-based efforts strive to improve public safety on the streets for women and for anyone who identifies as lesbian, gay, bisexual, trans, or queer through 3 core areas: 1) I've Got Your Back campaign; 2) Reporting harassment through 311; and 3) Research for Social Change.



Jane, Families for Freedom member, holding up a sign at Prison Divestment Rally. About half of immigrants detained are held in privatized facilities that cost taxpayers 2.5 billion dollars a year



Service Women's Action Network (SWAN) Truth and Justice Summit on Military Sexual Violence in Washington, DC

Mount Sinai Sexual Assault and Violence Intervention Program

Program Against Commercial Sexual Exploitation
Manhattan, Queens | \$70,000

The Mt. Sinai Sexual Assault and Violence Intervention (SAVI) Program provides free and confidential counseling, advocacy, and support services to victims of rape, sexual assault and domestic violence. SAVI's Program Against Commercial Sexual Exploitation aligns with NYWF's "zero-tolerance" policy towards commercial sexual exploitation and trafficking of minors and women. The program supports young women who are sexually exploited for commercial purposes by addressing their immediate physical safety needs and pressing medical concerns and provides crisis intervention and case management services, intensive individual counseling and strength-based peer support groups. SAVI provides survivors with an opportunity to turn away from the dangers of street life and begin a journey of healing and independent living.

New York City Alliance Against Sexual Assault

Citywide | \$60,000

The New York City Alliance Against Sexual Assault was founded to build the capacity of communities, organizations, and institutions to advance the right to live free of sexual violence and reduce the harm it causes individuals, families, and society. The Alliance spearheads citywide efforts to prevent sexual violence and ensure that survivors of sexual assault have access to the best acute and long-term care. Using Participatory Action Research, the Alliance assists local residents in researching, analyzing and solving problems, and also engages policy-makers and the health care system in dialogue and problem-solving to advocate for victims.

RightRides for Women's Safety

New Yorkers for Safe Transit
Citywide | \$70,000

RightRides for Women's Safety (RRWS) works to create safer communities by offering women and transgender individuals free rides home on Saturday nights through organizing volunteer drivers to operate a multi-vehicle fleet sponsored by Zipcar in designated New York City neighborhoods. The New Yorkers for Safe Transit (NYFST) coalition aims to educate and mobilize those most affected by gender-based violence on public transit. As a founding member of New Yorkers for Safe Transit, RRWS pursues coalition building and policy change work to increase safety in mass transit.

Funding for this grant was made possible by the generosity of Catalyst Fund at Groundswell Fund.

Service Women's Action Network

Community Development Program
Citywide | \$60,000

Service Women's Action Network (SWAN) is a non-partisan human rights organization working to improve the welfare of women veterans and U.S. service women. SWAN provides direct services to New York City's women veterans and service women and engages in advocacy and policy work around military-related trauma and gender-based violence. The Community Development Program offers women veterans access to peer-support hotline services, personal support and guidance from women veteran caseworkers, and pro bono legal referrals to military law experts. SWAN assists women who suffer military-related trauma through the healing process and helps them re-adjust to their local communities as empowered contributing members.

Voices UnBroken

Citywide | \$60,000

Voices UnBroken offers creative writing workshops and publishing opportunities for girls and young women who are in residential treatment centers, foster homes, jails, or juvenile detention centers. Through these workshops, participants increase their ability to engage in creative self-reflection, positively interpret challenges and develop a hopeful future orientation, increase their willingness to engage in other essential services (counseling, education, etc.), and gain confidence in their voice as vehicles for change in their own lives and in the communities they live in and/or will return to upon release/discharge. Voices UnBroken has also established an alumni program called Voices in Action, to provide leadership opportunities for former participants and training them in advocating for themselves, other young women like them, and their broader communities.

Service Women's Action Network (SWAN)
Truth and Justice Summit on Military
Sexual Violence in Washington, DC



Hot Bread Kitchen
Shift Supervisor
Adrianna Campbell
taking semolina loaves
out of the oven

ECONOMIC SECURITY

We promote the economic well-being and independence of women and girls by supporting programs that provide greater access to education, job training, employment and financial resources while also working to achieve economic justice.

Hot Bread Kitchen

Citywide | \$60,000

Hot Bread Kitchen's (HBK) mission is to create better futures for foreign-born women and their families by opening rewarding channels for work in the artisan baking industry. HBK is a workforce and micro-enterprise development program that helps increase the household wealth of immigrant women and their families. Together, participants bake ethnic breads utilizing many native recipes they bring to the program. These breads are then sold through farmers' markets and small groceries in New York City. In addition to training, HBK also provides culinary business incubation services to women and minority-owned businesses in East Harlem and in the Bronx.

Funding for this grant was made possible by the generosity of the Walmart Foundation.

Shruti's Story*

Shruti moved to New York from India in 2007 with her two children to escape her abusive husband. A single mother with an elementary school education, she had difficulty finding employment. Fluent in Urdu, Hindi and Punjabi, Shruti was not confident speaking English and became very nervous and shy when asked to speak. An expert home baker and cook, she eventually was able to find a job as a cashier and cook, earning minimum wage at a fast food restaurant; however, she did not feel comfortable as one of the few female employees. In order to find a better job, Shruti began working with another New York Women's Foundation grantee partner, Sanctuary for Families. Through Sanctuary's program, Shruti received counseling and career readiness services that referred her to Hot Bread Kitchen.

Shruti began working with Hot Bread Kitchen in 2011 and because of her home baking experience, she learned quickly how to make their line of 35 international breads. Shruti has also shared with HBK the delicious breads of her culture, including roti, chapatti and paratha. In addition to her baking training, Shruti receives English classes with other women from around the world and her fluency has greatly improved. Because all of the on-the-job training is paid, Shruti's wages are already 38% higher than at her previous restaurant job and she is now eligible for benefits for the first time in her career. In addition to the financial impact Hot Bread Kitchen's bakery training program has had, Shruti has also experienced a massive increase in confidence; this past fall, she gave a speech in English to 200 people. When asked about Hot Bread Kitchen she said, "Working here, I feel relaxed and supported and I'm so happy."

Shruti's story illustrates how immigrant women possess the keys to their future success, and with minimal technical training and assistance, they can build economic and personal security for themselves and their families.

*Certain details changed to protect identity.

A Better Balance

A Better Balance for Women in the Workforce Campaign
Citywide | \$75,000

Founded in late 2005, A Better Balance's mission is to promote equality and expand choices for women and men at all income levels so they may care for their families without sacrificing their economic security. The A Better Balance for Women in the Workforce Campaign is particularly beneficial to low-income women who most often hold jobs that lack such benefits, fail to provide accommodations to employees during pregnancy or as caregivers, and limit worker input into their work schedule. The campaign also addresses the unique needs of lesbian, gay, bi-sexual and transgender families, who are often denied access to paid family leave. The combined strategies of direct service, legislative action, and public education and monitoring around these issues have the potential to enact broad systemic and sustainable change for thousands of low-income New York City women and their families.

Accion East

New York Women's Program
Citywide | \$75,625

Accion East is a microfinance organization with the mission of providing people with the financial tools needed to work their way out of poverty. Through the New York Women's Program, Accion East makes affordable credit available to low-income women entrepreneurs who would otherwise be turned away by traditional capital sources. Accion East is focused on providing financial education services that

will help both current and potential borrowers to stabilize their business finances and sustain their microenterprises.

Funding for this grant was made possible by the generosity of the donors to the RISE-NYC! funding collaborative.

Adhikaar for Human Rights and Social Justice

Nari Shakti ("Women's Power")
Citywide | \$70,000

Adhikaar (Nepali for "Rights") promotes human rights and social justice in Nepali communities in New York City by increasing access to health care, advancing workers' rights, and supporting immigration reform. The Nari Shakti ("Women's Power") program works to ensure economic independence for Nepali women by providing opportunities to develop leadership and advocacy skills through workshops designed to support new immigrant women in the workplace. Upon completion of the workshops, participants are encouraged to volunteer and lead new initiatives to empower Nepali women, creating an innovative culture of direct service within the Nepali immigrant community.

ALIGN: The Alliance for a Greater New York

Citywide | \$60,000

ALIGN: the Alliance for a Greater New York is an alliance of community and worker organizations united to create good jobs, vibrant communities, and a more accountable democracy for all New Yorkers. ALIGN's position is that caregiving is at the heart of any effort to confront working poverty and expand opportunity for women in New York City. ALIGN's New York Caring Across Generations initiative is a multi-pronged community

organizing and advocacy strategy to equitably address the challenges of New York's growing aging population by promoting the creation of living wage home care jobs, improving access to quality care, and building a broad and long-term movement between home care workers, elders, people with disabilities, and other previously disconnected and disenfranchised groups.

Brooklyn Workforce Innovations

New York Drives
Citywide | \$60,000

Brooklyn Workforce Innovations works to help unemployed and working poor New Yorkers establish careers in sectors that offer living wages and opportunities for advancement. New York Drives is a workforce development program that provides poor women with free skills and job readiness training leading to a New York State Driver's License and placement in either a job or sector-based career development program. The goal of New York Drives is to connect poor women, in a relatively short period of time, with a means for earning both immediate income and long-term opportunity, despite the current economic downturn. New York Drives is free to participate and consists of a mix of group workshops covering job readiness and career exploration, individual behind-the-wheel instruction, and individual career counseling and job/program placement.

Funding for this grant was made possible by the generosity of the donors to the RISE-NYC! funding collaborative.



Miriam used her loan from Accion East to continue to support immigrants transitioning to the United States with her multi-service agency



A Better Balance staff at Paid Sick Days rally on the steps of City Hall



Business Outreach Center Network client and graduate of the Childcare Means Business Project, Diana Manyakhina, earns a living by doing what she loves, creating opportunity through Quality Early Childhood Education

buildOn, Inc.

The New York City After School Program
The Bronx, Brooklyn,
Manhattan | \$60,000

buildOn's mission is to empower at-risk youth in the U.S. to make a positive difference in their communities while helping people from developing countries increase their self-reliance through education. buildOn's New York City After School Program empowers high school students in underserved communities – 72% of whom are girls – to increase their level of education and maximize their potential through community service, weekly volunteer work, and participation in leadership development workshops and goal-setting exercises with their buildOn mentor.

Business Outreach Center Network

Child Care Business
Development Initiative
Citywide | \$60,000

The Business Outreach Center Network is a microenterprise/small business development organization that creates local community wealth, economically empowers individuals, and creates jobs with a focus on disadvantaged minority and immigrant women in low-income communities. The Child Care Business Development Initiative supports self-employment/business development and job creation in the high-demand childcare sector for Temporary Assistance for Needy Families (TANF) recipients, the unemployed and other low-income individuals and offers participants ongoing needs-based technical assistance, financial literacy, technology, and accounting resources. The program incorporates customized training, technical assistance and access to micro-equity grants, microloans and childcare specific legal services.

Funding for this grant was made possible by the generosity of the donors to the RISE-NYC! funding collaborative and the Walmart Foundation.

Center for Family Life/ SCO Family of Services

The New York City Cooperative
Development Project
Citywide | \$75,000

Established in 1978, Center for Family Life, a program of SCO Family of Services, is a neighborhood-based social service organization in Sunset Park, Brooklyn. For 34 years, the Center has grown with the Sunset Park community, responding to emerging needs with effective and innovative services. The New York City Cooperative Development Project supports the scaling up of the Sunset Park Cooperative Development Initiative, which

engages New York City based nonprofits serving low-income, immigrant women to incubate economically, socially, and environmentally responsible worker-owned business. Services include workshops on cooperative business development, assessments of organizational readiness, and intensive technical support.

Center for New York City Neighborhoods

The Neighborhood and
Economic Improvement Program
Citywide | \$60,000

The Center for New York City Neighborhoods (CNYCN) coordinates and expands services to New York City residents at risk of losing their homes to foreclosure. CNYCN's special initiatives serve as national models for comprehensive and coordinated outreach in other municipalities confronting the subprime lending and foreclosure crisis. The Neighborhood and Economic Improvement Program creates jobs for public assistance recipients (the majority of whom are women) within neighborhood cleaning projects that support low-income areas hard hit by the foreclosure crisis. They are then offered training and job placement services in bookkeeping, pharmacy technician, computer service or building maintenance.

Funding for this grant was made possible by the generosity of donors to the RISE-NYC! funding collaborative.

CHANGER, Inc.

Counseling Outreach Program for Education & Empowerment (COPE²) and the Homeowner Network Association
Citywide | \$60,000

CHANGER works with homeowners to end abusive mortgage lending practices in low and moderate-income communities in New York City through the use of consumer advocacy and education, financial and legal research, community organizing, public policy advocacy, and direct service provision. The COPE² program operates self-representation foreclosure defense legal clinics. In these clinics homeowners in danger of foreclosure are provided with access to free legal assistance, mortgage counseling, and financial education.

Funding for this grant was made possible by the generosity of donors to the RISE-NYC! funding collaborative.

Chhaya Community Development Corporation

Saathi Women's Empowerment Program
Citywide | \$50,000

Chhaya CDC was founded in 2000 to advocate for the housing needs of New York City's South Asian community and currently addresses a number of challenges, including overcrowded housing, foreclosure, homeownership, and civic engagement. Chhaya's Saathi Women's Empowerment Program provides financial education and skills training for low and moderate income South Asian immigrant women, with the goal of educating and supporting them in developing an understanding of financial and credit management, asset-building, and other related financial skills through workshops, peer groups, and counseling/coaching.

Cidadão Global/Global Citizen

Brooklyn, Manhattan and Queens | \$50,000

Cidadão Global is a community advocacy organization founded with the aim of ensuring that Brazilian immigrants gain access to resources and information in Portuguese in order to better understand their rights. Cidadão Global is the first and only community organization providing leadership development and essential services to New York's Brazilian community. The organization utilizes an intersectional approach to service delivery and examines program participants' needs through the lenses of gender, race, class, and sexuality.

Community Voices Heard

Building the Workforce Campaign
Citywide | \$50,000

Community Voices Heard is a membership organization of low-income individuals, mostly women, working together to build the power of their families and communities through a multi-pronged strategy including community organizing. Community Voices Heard's Building the Workforce campaign trains welfare recipients in New York City to be a collective voice on issues related to welfare and workforce development. The campaign involves organizing, public policy and leadership development work around welfare and workforce development issues, particularly concerning welfare programs and the public sector sweatshop economy. Through this campaign, Community Voices Heard is working toward the expansion of paid Transitional Jobs programs with education and training components that will enable women to gain permanent, living wage employment.

Funding for this grant was made possible by the generosity of donors to the RISE-NYC! funding collaborative.

East River Development Alliance

Financial Fitness Program
Queens | \$50,000

East River Development Alliance (ERDA) provides residents of four public housing neighborhoods in Western Queens with the tools and resources needed to achieve economic mobility and self-sufficiency, and to break intergenerational cycles of poverty. Through its Financial Fitness Program, ERDA offers a comprehensive, integrated financial education program including crisis counseling, asset building counseling, community-based financial educational workshops, free tax preparation, tenant advocacy services, comprehensive public benefits screening and enrollment, and access to relevant financial services and products through the ERDA Federal Credit Union. All ERDA financial education programs are fully integrated into ERDA's workforce development and youth development/college access programs; approximately 7 in 10 participants in the Financial Fitness Program are women.

Funding for this grant was made possible by the generosity of donors to the RISE-NYC! funding collaborative.



Cidadão Global members at the Albany's Immigrant Day of Action in 2012



Figure Skating in Harlem's Harlem ICE Synchronized Skating team



Microloans from Grameen America enabled Marcia to open and expand her stall

Empire State Pride Agenda Foundation

Transgender Civil Rights
Citywide | \$60,000

Empire State Pride Agenda (Pride Agenda) is a statewide multi-issue lesbian, gay, bisexual, and transgender (LGBT) civil rights group working towards winning equality and justice for over twenty years. Pride Agenda focuses its work on an underserved, often low-income population who are marginalized and discriminated against based on their gender identity and expression. In order to achieve transgender civil rights, Pride Agenda will engage in organizing, education, advocacy, and other awareness-building activities to work towards passage of state-level and citywide legislation to prohibit discrimination based on gender identity and expression in employment, housing, public accommodations and credit, and to include gender identity and expression in current hate crimes law.

Figure Skating in Harlem

The Bronx, Manhattan | \$70,000

Figure Skating in Harlem works to transform young lives and help girls grow in confidence, leadership, and academic achievement. By using the artistic discipline of figure skating as a powerful magnet, FSH helps girls from underserved communities overcome barriers to educational and economic opportunities. The program provides a supportive after-school environment complete with academic tutoring, counseling, career workshops, mentoring, cultural field trips and more. Through this combination of the unique discipline of figure skating and academic enrichment, girls engage in an extraordinary process of physical, mental, and social transformation that instills confidence, a sense of purpose and hope for a better future.

Girls Write Now

Citywide | \$50,000

Girls Write Now (GWN) works to advance gender equality and social justice by empowering young women-of-color as writers. Through its core Mentoring Program, as well as their ever-growing Girls College Bound program, GWN helps at-risk and underserved, motivated girls from New York City's public high schools realize their writing potential, and provides a safe and supportive environment where the young women can expand their talent, develop independent, creative voices and gain confidence to make healthy school, career, and life choices. GWN's work and commitment over the years has enabled hundreds of young women to connect with successful, professional women writers in New York City and has encouraged their responses to the local and national issues that affect their lives as girls and women.

Good Old Lower East Side

Public Housing Program
Manhattan | \$70,000

Good Old Lower East Side (GOLES) is a neighborhood preservation organization dedicated to supporting housing and economic justice for low-income residents of the Lower East Side. GOLES addresses issues of displacement and gentrification and seeks to preserve and expand affordable housing options in the community. Through the Public Housing Program, GOLES will continue to educate and inform public housing residents about the issues and regulations that affect them, develop and train community leaders, increase participation in public campaigns that advocate for responsive, affordable housing policies, increase support from local officials and businesses for public housing issues, and ensure

that the New York City Housing Authority continues to be held accountable for tenant concerns. The program advocates on behalf of low-income women and families to ensure the stability and affordability of public housing.

Grace Outreach

The Bronx, Manhattan | \$60,000

Located in the South Bronx, Grace Outreach serves a diverse group of low-income women who have aged out of the New York City school system without a high school diploma and who seek to improve their academic skills, pursue post-secondary education and establish employment paths that lead to economic security. Learning at Grace Outreach takes place in a safe, non-judgmental environment that fosters hope and builds confidence. Program participants did not finish high school for a number of reasons, including pregnancy, placement into foster care, domestic violence, substance abuse as well as physical and mental health issues. Participants' successes stem from a results-focused model that combines a rigorous education curriculum with a highly individualized support that addresses the needs of each student. By actively participating in Grace Outreach's intensive academic program, a woman can rapidly earn her high school equivalency diploma (GED), and then capitalize on her success by pursuing further education or employment goals.

Grameen America

MicroLoan Program – New York
The Bronx, Brooklyn,
Manhattan, Queens | \$70,000

Grameen America is a microfinance organization whose mission is to help alleviate poverty through entrepreneurship. The New York MicroLoan program is a poverty-focused microfinance initiative that provides low-income women with the opportunity to start or expand businesses, create jobs for themselves and others in their communities, accumulate assets, develop their credit scores and participate in ongoing financial and business development training.

The economic crisis has disproportionately impacted the working poor and many are forced to turn to alternative sources of income to provide for their most basic needs. Grameen America focuses on improving the economic security of women as they recognize the unique role women play as catalysts for economic development within their families and broader communities.

Funding for this grant was made possible by the generosity of donors to the RISE-NYC! funding collaborative and the Walmart Foundation

Grand St. Settlement

Grand St. Settlement IMPACT
Brooklyn, Queens | \$60,000

Grand St. Settlement provides residents of the Lower East Side and Bushwick communities with the tools and support they need to overcome challenging circumstances and build productive lives and futures. Its comprehensive and culturally relevant programs and services assists more than 10,000 area residents of all ages annually—from toddlers in Early Head Start and Day Care to school-age youth, young adults, and senior citizens. The Grand St. IMPACT program provides support for low-income mothers and caretakers of children in Grand St.'s Bushwick Child Care Center, including a bilingual mother-child family literacy group, mother's peer support group, and opportunities for leadership development through training as Peer Advocates. These services help build literacy skills and reading practices among families, support women to develop networks of mutual support and address stress and anxiety, and provide linkages to other needed wraparound services, including ESL, adult education classes, and child care.

Haitian Women for Haitian Refugees

The Bronx, Brooklyn,
Manhattan | \$60,000

Haitian Women for Haitian Refugees (HWHR) seeks to educate and empower Haitian refugees through a continuum of education classes. Workers' rights issues, job search and negotiation skills are incorporated into each level of the course. Participants also identify opportunities to organize and advocate for themselves around critical such as domestic violence, immigration reform, and improved fair labor standards for home health aides and domestic workers.

Haitian Women for Haitian Refugees
staff and supporters



Hour Children

Hour Working Women Program
Queens | \$60,000

Hour Children provides women coming home from prison with safe and stable environments to reunite and live with their children. Hour Children provides housing and 16 other programs designed to assure successful re-entry and reunification for women and their children both within prison and in the community. The Hour Working Women Program provides educational assistance with GED preparation and college admissions as well as on-the-job training and on-site internships in retail, marketing, basic office skills, and merchandising. The program also offers job and vocational training opportunities offsite.

Funding for this grant was made possible by the generosity of donors to the RISE-NYC! funding collaborative.

Hunts Point Economic Development Corporation

El Programa Para Empresarias Latinas
(Program For Latina Entrepreneurs)
The Bronx | \$50,000

Hunts Point Economic Development Corporation (HPEDC) works to improve and enhance the Hunts Point business environment by cultivating small businesses and entrepreneurs throughout the Bronx and empowering its residents to participate in the local economy. HPEDC's core programming includes microenterprise development, Entrepreneurship Training Courses, and the Bronx Women's Business Resource Center. The Program for Latina Entrepreneurs at the Bronx Women's Business Center provides comprehensive small business support for Latina immigrant entrepreneurs in the South Bronx to help them develop business plans and marketing materials, apply for and obtain certification, and attain the licenses needed to grow new and existing businesses.

Legal Information for Families Today

Women's Program
The Bronx, Brooklyn,
Manhattan and Queens | \$50,000

Legal Information for Families Today increases access to justice for children and families by providing legal information, community education, and compassionate guidance, while promoting system-wide reform of the courts and public agencies. The Women's Program increases family stability by providing critical services to low-income mothers who are involved in child support, custody, or visitation cases without legal representation. Program services include individualized legal information and compassionate guidance, crisis intervention and referrals for job placement, income supports and financial literacy.

Lexington Vocational Services Center, Inc.

Deaf Women for Economic Independence
The Bronx, Brooklyn, Manhattan
and Queens | \$50,000

Lexington Vocational Services Center seeks to maximize the quality of life of deaf adults through employment as they achieve independence and productivity. The Deaf Women for Economic Independence program provides deaf women with free and comprehensive pre-employment services, job placement and post-employment services. The program aims to change the culture of employers by educating and preparing them to be more inclusive of deaf individuals in the workforce. In this way, they are affecting change for the low-income, deaf community on both the individual and institutional level.

Literacy Partners

Family Literacy/ESOL
The Bronx and Manhattan | \$50,000

Literacy Partners was founded to provide free literacy classes in New York City to families and individuals, ages 16 and older. The Family Literacy/ESOL program, located in the South Bronx, helps women, many of whom have recently immigrated to the United States, to achieve the spoken and written fluency in English necessary to compete in the job market while providing guidance for parental tasks such as helping their children with homework and communicating with their children's teachers.

Local Development Corporation of East New York

Women Rise to Financial Independence Program
Brooklyn | \$60,000

The Local Development Corporation of East New York works to develop the local economy of East Brooklyn through the development and retention of sustainable businesses and initiatives to expand the assets of community residents. The Women Rise to Financial Independence Program targets two distinct groups of women: non-entrepreneurs seeking to improve their financial situations and entrepreneurs looking to improve the stability of their businesses in order to expand and create employment for themselves and others.

Funding for this grant was made possible by the generosity of donors to the RISE-NYC! funding collaborative.

Make the Road New York

Immigrant Women Economic Opportunity Project
Brooklyn, Queens,
Staten Island | \$60,000

Make the Road New York (MRNY) is the largest participatory grass-roots immigrant organization in New York City. The organization brings together low-wage immigrant workers, young people, and lesbian, gay, bi-sexual and transgender community residents to promote equality, justice and opportunity for all New Yorkers. The Immigrant Women Economic Opportunity Project (IWEOP) combines the resources of MRNY's Workforce Development, Adult Education, Legal and Support Services, and Organizing Programs to provide job placement, adult literacy classes, and income support assistance to immigrant women. MRNY's workforce development staff provides individualized job readiness services including goal planning, resume writing, employment skills workshops, and job matching services focusing on employers with a track record of respecting labor laws. MRNY also provides direct legal representation, case management, facilitated enrollment into public health insurance programs, legal trainings, and services such as a free notary public and an emergency food pantry.

Funding for this grant was made possible by the generosity of donors to the RISE-NYC! funding collaborative.

Mercy Center

Employment Yes!
The Bronx | \$60,000

Mercy Center is a comprehensive community resource center serving women and families in the Mott Haven section of the South Bronx, the nation's poorest Congressional

district. For 20 years Mercy Center has supported women and their families, helping them move from crippling poverty to economic self-sufficiency. The Employment Yes! computer technology training and job readiness program includes two main components: Skills Training courses, which provide women with the computer and "soft" skills needed to get an administrative job, and Job Development, which provides one-on-one support throughout the job search process and into employment. The program allows participants to learn marketable computer skills and find new confidence in their achievements.

Funding for this grant was made possible by the generosity of donors to the RISE-NYC! funding collaborative.

New York Legal Assistance Group: LegalHealth

Women's Stability Project
Citywide | \$50,000

New York Legal Assistance Group (NYLAG) is a nonprofit law office providing free civil legal services to low-income New Yorkers who cannot afford a private attorney. LegalHealth was developed in 2001 as a unique project within NYLAG to address the nonmedical needs of low-income people with serious health problems. LegalHealth's Women's Stability Project provides free legal services for women in NYC hospitals, particularly single female heads of households, underserved older women, pregnant women and new mothers. The program also provides training for healthcare professionals to understand the legal issues their patients face.

Funding for this grant was made possible by the generosity of donors to the RISE-NYC! funding collaborative.

ParentJobNet

Manhattan | \$70,000

Started as an internet-based resource linking women to jobs, ParentJobNet has grown into a school-based community program founded on the premise that strengthening the economic security of parents promotes the well-being of their children. Using a holistic, family-integrated approach, Parent JobNet provides parents, primarily mothers, of children in public schools with classes in English literacy, financial planning and resume preparation, and seeks to increase parents' access to job training resources and employment opportunities.

Participatory Budgeting Project

Participatory Budgeting New York City
Brooklyn, Manhattan,
Queens | \$75,000

Founded in 2009, the mission of The Participatory Budgeting Project is to empower community members to make informed, democratic, and fair decisions about public spending and revenue. Participatory Budgeting NYC (PBNYC) is a local initiative to expand participatory budgeting from four to eight NY City Council districts, and lay the groundwork for more community control in government decision-making in NYC. PBNYC empowers low-income women to gain leadership skills while making informed, democratic, and fair decisions about public spending and revenue that benefit their larger communities. PBNYC's long term goal is to open up other public funds for participatory decision-making, and in time generate class and gender equity in public spending decisions.



Literacy Partner's Family Literacy Coordinator Roy Villanueva assists his student at the board



Row New York's high school team enjoys a beautiful day on Meadow Lake

Per Scholas

Women's Program at Per Scholas
Citywide | \$50,000

The Per Scholas Institute for Technology is New York City's oldest and largest IT workforce development initiative. Begun in 1999 in the South Bronx, it offers free, full-time technical skills training, including computer, printer and network administration skills, delivered by certified instructors. The Women's Program works with all-women cohorts with the goal of helping a larger number of low-income adult women, especially from communities of color, complete the Per Scholas training program and succeed in new careers as IT professionals.

Funding for this grant was made possible by the generosity of the Walmart Foundation.

Red Umbrella Project

Citywide | \$50,000

The Red Umbrella Project (RedUP) reframes public dialogue about the impact of stigma and discrimination on people who trade sex for things they need, through the lens of lived experiences. RedUP's work takes a two-pronged approach to this work: 1) training and storytelling programs that assist people in the sex trade to challenge common narratives about the sex industry by centering their own voices and personal stories, and 2) providing people in the sex trade with communication skills and transferable job skills that they can use to build a strategy to exit the industry.

Row New York

The Bronx, Brooklyn,
Manhattan, Queens | \$70,000

Row New York provides a holistic after school program that includes competitive sports and college preparation for low-income girls and young women in Queens. Program participants engage in a highly structured after school program that combines intensive rowing activities with comprehensive academic support. Row New York aims to empower girls and young women by improving their mental and physical health, teaching them the value of teamwork, and encouraging them to develop a strong commitment to their peers. The program provides high school participants with rigorous academic support through individualized tutoring and college preparation. All of the program graduates go to college, many of them on rowing and academic scholarships.

Sakhi for South Asian Women Economic Empowerment Program

Citywide | \$60,000

Sakhi unites survivors, communities and institutions to eradicate domestic violence and create strong and healthy communities. Sakhi creates a safe place with support and a full-range of culturally-sensitive services for South Asian survivors of violence. Sakhi's Economic Empowerment Program provides survivors with opportunities to access financial options, build skills that strengthen self-sufficiency, and have choices that enable lives without violence. The Economic Empowerment program addresses specific barriers survivors face in making decisions for their own safety – and the safety of their children – including spousal control and financial manipulation, lack of work permits or certifications which translate to U.S. standards, and lack of awareness of U.S. systems.

Funding for this grant was made possible by the generosity of donors to the RISE-NYC! funding collaborative.

Sanctuary for Families

Domestic Violence Workforce Initiative
Citywide | \$60,000

Sanctuary for Families provides integrated clinical, legal, shelter, and economic empowerment services to domestic violence victims and their children. These direct services are complemented by extensive community outreach, training and education, and systems change advocacy. The Domestic Violence Workforce Initiative offers intensive in-house training programs including job readiness, career development, and basic office skills to survivors of domestic violence.

Funding for this grant was made possible by the generosity of the Walmart Foundation.

St. Vincent's Services

SMART Girls Program
Staten Island | \$60,000

St. Vincent's Services is a foster care agency where 51% of its participants are girls and young women. SMART Girls is designed to promote increased self-esteem for girls and young women in foster care through weekly group sessions that build trust, foster social connection, and empower the girls to make safe and productive decisions. Girls participate in activities such as a Book Club, College Bound Mentoring, Creative Expression groups that employ art/creative self-expression activities in a therapeutic setting to help them deal with their traumatic experiences, and cultural outings/community service to introduce the SMART Girls to the rich artistic heritage of the many peoples of the world.

Start Small. Think Big.

The Bronx, Brooklyn,
Manhattan, Queens | \$50,000

Start Small. Think Big. empowers program participants — over 80% of whom are low-income women — to increase their economic opportunities and build sustainable financial independence. Their goal is to provide participants with the tools that they need to direct their own path toward a future of increased assets, reduced vulnerability to financial shocks, and improved economic security. Services include holistic case management to create individualized Economic Security plans, one-on-one financial counseling, and legal workshops and clinics on small business legal matters, bankruptcy, and consumer debt.

Funding for this grant was made possible by the generosity of the Walmart Foundation.

STRIVE International/ East Harlem Employment Services

Office & Medical Operations
Training Program
Citywide | \$50,000

STRIVE is a workforce development organization dedicated to increasing economic security for individuals in New York City who face the greatest impediments to employment, including those who are recovering addicts, formerly incarcerated, recipients of public assistance, and homeless. Since 1994, STRIVE has transformed the lives of over 40,000 graduates through comprehensive job training, career development services. The Office & Medical Operations Training Program provides low-income women skills training and individualized job placement support so they may pursue and obtain employment in the office administration field. By participating in these programs,

women are more prepared to succeed in today's office environment. Throughout the training, women trainees are encouraged to take advantage of a range of supportive services to help them gain access to health care, child care, and child support; manage legal and housing issues; and undergo the difficult transition from public assistance to employment.

Funding for this grant was made possible by the generosity of donors to the RISE-NYC! funding collaborative.

Union Settlement Association

El Camino Health Pathways:
Home Health Aide Training and
Job Placement Program
Citywide | \$50,000

Union Settlement Association seeks to foster leadership and self-sufficiency by assisting families in East Harlem to build better lives for themselves and their community. The El Camino Health Pathways: Home Health Aide Training and Job Placement program provides low-literacy women who lack a GED with increased access to educational opportunities and prepares them for higher paying jobs in the high-growth, high-demand healthcare sectors by improving literacy and English levels.

Upwardly Global

Women's Career Services Program
Citywide | \$60,000

Upwardly Global works to move America's immigrant working poor into positions of financially sustainable employment. Through the Women's Career Services Program, Upwardly Global works to empower immigrant women professionals to gain economic self-sufficiency by providing them with the tools they need to reclaim their professional careers in the US and move them and their families

from poverty into jobs with financial security. The Women's Career Services Program educates immigrant women to overcome multiple barriers to gaining labor market entry through a job readiness program that targets immigrant professionals.

Funding for this grant was made possible by the generosity of donors to the RISE-NYC! funding collaborative and the Walmart Foundation.

Urban Justice Center: Homelessness Outreach and Prevention Project

Partnership for Women's
Educational Advancement Project
Citywide | \$70,000

The Homelessness Outreach and Prevention Project of the Urban Justice Center advocates for economic justice for low-income individuals. The Center ensures access to public benefits through direct legal services, litigation, research, and policy advocacy. The Partnership for Women's Educational Advancement Project seeks to ensure that pregnant young women and young mothers on welfare can access educational opportunities and continue to receive public benefits while in school. The Project engages in community education and outreach to inform public assistance recipients of their welfare rights and provide them with the information necessary to know when their rights to receive benefits are being violated.

Toddler learning his ABCs at Shirley's Rugsrats Group Day Care, a successful business started by WHEDco's Home-based Childcare Program graduate



Year Up New York Class 9 Alumna Porsha Canales presenting the Mentor of the Year Award to her mentor Siobhan Bonnouvrier, Style Director at *Allure* Magazine



VAMOS Unidos

Citywide | \$70,000

VAMOS Unidos is a membership organization that aims to achieve economic and social justice for Latinas living in low-income immigrant communities in the Bronx. The organization assists Latinas in applying for street vending permits and it provides direct services to build leadership and promote the grassroots organizing efforts of its members. VAMOS Unidos supports street vendors by working with local police precincts to help with matters related to police harassment and advocates for policy changes to decrease the arrest rate of street vendors by increasing the number of legal permits available from New York City government.

Violence Intervention Program

Economic Empowerment Program
Citywide | \$60,000

Violence Intervention Program (VIP) was founded in 1984 in response to the unmet need for bilingual, culturally competent services for battered Latina women and their families in New York City. VIP's Economic Empowerment Program provides a comprehensive array of economic empowerment services to survivors of domestic violence including one-on-one and group sessions in the areas of financial literacy, budgeting, asset building, debt reduction, credit repair/building, banking and financial planning as well as leadership development, life skills, and job readiness training. In addition, personal barriers such as childcare, housing, health, immigration, and psychological concerns are addressed through case management services.

Funding for this grant was made possible by the generosity of donors to the RISE-NYC! funding collaborative.

Westchester Square Partnership, Inc.

The Bronx, Brooklyn, Manhattan, Queens | \$60,000

Westchester Square Partnership (WSP) works to promote social justice and economic empowerment of the South Asian immigrant women's community in New York City. WSP focuses its activities on building collaborations with community members and existing organizations, fostering the provision of accessible social and health services and facilitating community research and program development that is responsive to the needs of the community.

Women's Housing and Economic Development Corporation

Home-Based Childcare Business Development Initiative
The Bronx | \$60,000

The Women's Housing and Economic Development Corporation (WHEDco) works with families in the Bronx who struggle with the multiple challenges presented by poverty. WHEDco's Home-Based Childcare (HBCC) Initiative serves as a ladder to economic self-sufficiency by helping women to form and grow successful childcare businesses through training in bookkeeping, business planning, health and safety, and child development. HBCC enables low-skilled women impacted by the economic recession to access start-up funds, technical assistance and referrals.

Funding for this grant was made possible by the generosity of donors to the RISE-NYC! funding collaborative and the Walmart Foundation.

Year Up New York

Young Women's Initiative
Citywide | \$50,000

Year Up New York is a one-year intensive training and corporate internship program designed to empower urban young adults, ages 18-24, who possess a high school diploma or GED, but are otherwise disconnected from the economic mainstream, to reach their potential through professional skills and higher education. The Young Women's Initiative provides social services, support groups, gender-specific retreats, and networking events designed to assist young women to become change agents in their own lives, families and communities.

Funding for this grant was made possible by the generosity of the Walmart Foundation.

Young Women's Christian Association of Queens

Women to Work
Queens | \$60,000

The Young Women's Christian Association (YWCA) of Queens provides programming for immigrant women of all ages through five main programs operating in Flushing, Queens: The Center for Children, Center for Youth, Center for Adults, Center for Seniors and Center for Arts & Culture. The Women to Work program trains low-income or unemployed immigrant women to become skilled workers in the healthcare industry. In addition to job specific skills, participants receive ESOL classes, job readiness instruction, computer instruction and job placement and career counseling until they find a job.

Funding for this grant was made possible by the generosity of donors to the RISE-NYC! funding collaborative and the Walmart Foundation.



HEALTH, SEXUAL RIGHTS & REPRODUCTIVE JUSTICE:

We support programs that help women and girls to take control of their health and sexual rights and to obtain quality health care, including the full range of reproductive health services.



Graduation Day
for a few of the 2012
Inside Out participants

Bronx AIDS Services

GO GIRL Inside Out

Bronx | \$50,000

Bronx AIDS Services (BAS), founded in 1986 at the beginning of the AIDS epidemic, is a leading provider of non-hospital based HIV/AIDS services in the Bronx. Its mission is to empower and improve the lives and circumstances of adults and adolescents in the Bronx who are HIV positive or at risk. BAS' GO GIRL's Inside Out program provides young women (ages 14-18) who already possess a basic level of knowledge about HIV risk factors with a second level of intervention focused on personal risk factors and triggers for risky sexual behaviors. It combines group- and individual-level sessions that also address the underlying issues that serve as barriers to young women maintaining optimal sexual health.

Changing from the Inside Out

GO GIRL participant Kathryn* is a smart, 18-year-old young lady who has completed all of the GO GIRL interventions since her arrival in 2010. Despite repeated group- and individual-level interventions that focused on safer sex strategies and HIV transmission, Kathryn continued to engage in risky sexual behaviors. She had been diagnosed with two STIs within the 6 months prior to her enrollment in the Inside Out intervention. Through her participation in the more intensive psychosocial-based Inside Out intervention, Kathryn began to disclose to the Wellness Coordinator a past sexual abuse history, which had led to her low self-worth, negative decision making, and poor coping skills. She expressed that she had been depressed for years, spoke longingly of wanting to improve her sexual and mental health, and articulated the need for a trusted adult to guide her in the right direction. As she worked through her issues with the Wellness Coordinator, Kathryn was able to pinpoint her triggers for engaging in risky behaviors and develop healthy coping skills.

After completing Inside Out, Kathryn reports that she is currently practicing abstinence while she concentrates on her mental health and intends to use condoms in all of her future sexual encounters. Not only is she enrolled in college classes with plans to become a fashion designer, Kathryn has become actively involved in GO GIRL's Youth Leadership program where she uses her experiences to educate her peers on the consequences of risky behaviors and the importance of healthy decision making.

*Certain details changed to protect identity.

Callen-Lorde Community Health Center, Inc.

Transgender Care Coordination Program
Citywide | \$50,000

Callen-Lorde Community Health Center's mission is to provide quality health care and related services targeted to New York's lesbian, gay, bisexual, transgender and queer/questioning communities, while welcoming all who seek services, regardless of ability to pay. The Transgender Care Coordination Program addresses the need for targeted and sensitive medical care coordination services for transgender and gender non-conforming individuals.

Community Health Action of Staten Island

Young Women's Task Force
Citywide | \$50,000

Community Health Action of Staten Island works to improve the lives of individuals, families and communities challenged by health disparities related to poverty, discrimination and lack of access. The Young's Women's Task Force (YWTF) empowers Staten Island's low-income adolescent women-of-color to avoid unintended pregnancies and infections with HIV and other sexually transmitted infections (STIs). The YWTF's intensive sexual education and training program develops young women as peer leaders capable of delivering prevention messaging in their schools, homes and other settings.

Correctional Association of New York

Reproductive Justice for Women in Prison Campaign
Citywide | \$75,000

The Correctional Association of New York (CA) was formed in 1844 by citizens concerned about prison conditions and the lack of services for inmates returning to communities. Through prison monitoring, research, public education, leadership training, coalition building, and policy advocacy, the CA works to create a more fair, just, and humane criminal justice system. Created in 1991, the CA's Women in Prison Project (WIPP) works to stop the misuse of prison as a response to the social ills that drive crime, and to facilitate the leadership of currently and formerly incarcerated women in efforts to reform the criminal justice policies that directly affect their lives. WIPP's Reproductive Justice for Women in Prison Campaign is aimed at ensuring access to quality reproductive health-care and advancing reproductive justice for incarcerated women.

Jacob A. Riis Neighborhood Settlement House

Riis Academy Girls Inspiring in Real Life Program
The Bronx, Brooklyn, Manhattan, Queens | \$60,000

Jacob A. Riis Settlement House's goals include an equal and active voice of community members in the decision-making process in their neighborhoods and communities; and ensuring that community members improve their educational attainment in order to achieve economic success and independence. The Riis Academy Girls Inspiring in Real Life program includes youth-directed outreach, counseling and advocacy training for young women, ages 10 to 14, who are at risk for unhealthy sexual behavior.

Love Heals, the Alison Gertz Foundation for AIDS Education

The Leadership Empowerment and Awareness Program (LEAP) for Girls
Citywide | \$70,000

Love Heals provides comprehensive AIDS education to empower young people to make informed choices and foster a new generation of community educators and activists in New York City committed to the fight against AIDS. The Leadership Empowerment and Awareness Program (LEAP) for Girls provides young women of color with information on HIV/AIDS and reproductive health education. LEAP focuses on neighborhoods that report high HIV rates and collaborates with schools and community groups to provide leadership training as well as the skills and knowledge needed for young women to become empowered, healthy and safe members of their communities.

National Mobilization Against SweatShops

The Lower East Side Women's Health Project
Manhattan | \$70,000

National Mobilization Against SweatShops was formed to address the lack of multiracial organizing for the common needs of low-income workers across all service sectors, including the garment, restaurant, retail, and cleaning industries. The Lower East Side Women's Health Project addresses the immediate health needs of low-income women in the Lower East Side through preventative, community-based approaches including workshops on mental health and nutrition, information provision and referrals to affordable health care options, and classes on dance, yoga, and the arts. The Project also organizes for change around the public health concerns of the community on issues such as housing conditions and displacement.



Team Voces Latinas participating in AIDS Walk 2012

The POINT Community Development Center

The Where Our Minds Empower Our Needs (W.O.M.E.N.) Project
The Bronx | \$50,000

The POINT is dedicated to youth development and the cultural and economic revitalization of the Hunts Point section of the South Bronx. The W.O.M.E.N. Project engages girls and young women ages 13 to 21 from Hunts Point in a peer education project aimed at increasing awareness of HIV/STIs and teen pregnancy among young African American/black and Latina/Hispanic women and empowers them to get involved in prevention programming.

SPARKS

Brooklyn | \$50,000

SPARKS' mission is to help women from low-income and Orthodox Jewish communities in Brooklyn who suffer from Post-Partum Depression (PPD) but face economic and cultural barriers in getting help. SPARKS' programs offer information, services and referrals to enable women and their families to overcome financial and cultural obstacles that prevent them from seeking treatment for PPD, which can lead to hospitalization for depression, self-neglect, child neglect and even infanticide and maternal suicide.

Voces Latinas

Queens | \$70,000

Voces Latinas is a community-based program founded in response to the escalating rates of HIV infection among immigrant Latinas living in Queens. The organization aims to reduce the rates of HIV transmission among immigrant Latinas through education, empowerment, leadership training and the provision of linguistically and culturally appropriate services. Through Voces Latinas' "promotoras" program, immigrant women are trained as peer HIV prevention educators and equipped with advocacy skills needed to raise awareness about HIV/AIDS and effect positive change within the Latina immigrant community.

Funding for this grant was made possible by the generosity of Catalyst Fund at Groundswell Fund.

Partnerships for Responsive Funding

Through partnerships with other local and national sources of funding, The Foundation increases its ability to respond swiftly to new challenges, thereby promoting greater economic security for women and families. Below is a description of our 2012 funding partnerships.

RISE-NYC! (Respond, Inspire, Solve, Engage)

In 2009, driven by our commitment to promote the long-term economic security of New York City's women and families and in an effort to respond to their increased need during the economic recession, The New York Women's Foundation announced the launch of RISE-NYC! (Respond, Inspire, Solve, Engage) which mobilized financial and human resources to:

- Promote financial stability and economic security for women and families hardest hit by the crisis.
- Create opportunities for New Yorkers to volunteer their skills and talents to assist women and families dealing with a variety of challenges during this crisis.
- Align our responses with those from other sectors to maximize investments and accelerate solutions.

RISE-NYC! provides immediate support to women and families hardest hit by the economic crisis by:

- Building and increasing assets through microenterprise financing, development and training; small business development; and the creation of individual development accounts;
- Increasing access to educational opportunities for higher paying jobs in high-growth, high-demand sectors such as technology, healthcare, green jobs, as well as nontraditional careers, such as jobs in construction; and
- Increasing family stability through a variety of strategies such as financial literacy and skills development; increasing access to work and income supports such as child care, after-school programs, and government benefits; and providing urgent mental health, domestic violence and other crisis intervention services.

Our 2012 RISE-NYC! grantee partners:

Accion East
Brooklyn Workforce Innovations
Business Outreach Center Network
Center for New York City Neighborhoods
CHANGER
Community Voices Heard
East River Development Alliance
Grameen America
Hour Children
Local Development Corporation of East New York
Make the Road New York
Mercy Center
New York Legal Assistance Group: LegalHealth
Sakhi for South Asian Women
STRIVE/East Harlem Employment Services
Upwardly Global
Violence Intervention Program
Women's Housing and Economic Development Corporation
YWCA of Queens

Hurricane Sandy Response & Recovery Fund

In November 2012, driven by our commitment to advance and ensure economic security for New York City's women and families and by our imperative to respond to emerging and critical needs for women and families, The New York Women's Foundation established the NYWF Hurricane Sandy Response and Recovery Fund (The Fund). The Fund will commit \$1 million dollars to be used over the next 4 years to re-build safety and economic security for women and families impacted by Hurricane Sandy in the five boroughs.

In December 2012, the Fund distributed \$250,000 to current and former grantees to address the immediate needs of these women and families. Beginning in 2013, The Foundation will assess continuing needs and designate up to \$250,000 annually, through 2015, to address the longer term economic security, safety and health needs that may continue to be heightened for these families due to the lingering and extended effects of Sandy's disruption.

We are grateful for the partnership of NoVo Foundation, Fifth and Pacific Foundation and individual donors who make The NYWF Hurricane Sandy Response and Recovery Fund possible.

The Catalyst Fund at Groundswell Fund: Resources for Women of Color in Reproductive Justice

For a fifth consecutive year, in 2012, The Foundation partnered with The Catalyst Fund at Groundswell Fund to increase investments and visibility of the vital contributions of women of color in leadership in the reproductive justice movement. The Foundation awarded grants to the following local community-based women-of-color led reproductive justice organizations:

RightRides for Women's Safety	Service Women's Action Network (SWAN)	Voces Latinas
-------------------------------	---------------------------------------	---------------

Our 2012 Hurricane Sandy Response and Recovery Fund Grantees:

Amethyst Women's Project

CAAV: Organizing Asian Communities

Center for New York City Neighborhoods

Community Health Action of Staten Island

Chinese Staff & Worker's Association

East River Development Alliance

Good Old Lower East Side

Grand St. Settlement

Haitian Women for Haitian Refugees

The Hetrick-Martin Institute

Make the Road New York

New York City Gay and Lesbian Anti-Violence Project

New York Legal Assistance Group

Queers for Economic Justice

Year Up New York

Management and Leadership Institute

The New York Women's Foundation invests in strengthening the ability of its grantee partners to flourish and endure as powerful, self-reliant organizations; through capacity building grants and partnerships, our grantee partners gain access to the technical skills necessary to grow strong organizations and powerful leaders.

2012 Individual Capacity Building Grants

The New York Women's Foundation awarded a total of \$85,000 in capacity building grants to seventeen grantee partners to strengthen organizational infrastructure and increase the effectiveness of their programmatic activities. Organizations requested assistance in the following areas: board development, communications, evaluation, fundraising, information technology, program development and strategic planning. Below is the list of grantee partners that received capacity building grants in 2012:

Community Voices Heard
Grand Street Settlement
Hour Children
Housing + Solutions
Jacob A. Riis Neighborhood Settlement House
ParentJobNet
Queers for Economic Justice
Row New York
Sakhi for South Asian Women
SPARKS
St. Vincent's Services
STRIVE/East Harlem Employment Services
The POINT Community Development Center
Turning Point for Women and Families
Violence Intervention Program
Westchester Square Partnerships
Young Women of Color HIV/AIDS Coalition

2012 Strategic Capacity Building Partnerships

In 2012, The Foundation continued its capacity building pilot initiative through strategic partnerships with nonprofit consulting firms. Through these partnerships, 36 of The Foundation's grantee partners participated in structured peer learning opportunities combined with one-on-one consultations to increase their organizational and programmatic capacities in strategic planning, fundraising, human resources management and media. Partnering nonprofit consulting firms were:

CAUSE EFFECTIVE

To provide a series of workshops and one-on-one consultation for grantee partners to strengthen individual donor development and increase overall fundraising capacity.

GRITtv

To implement a day-long media training for grantee partners that focused on message development, public speaking, media relations, and on-air practice for television.

SEED

To provide grantee partners with customized strategic planning, visioning, and coaching services to increase program and organizational performance.

2012 New York City Technical Assistance Funder's Collaborative

The New York City Technical Assistance Funder's Collaborative strengthens the leadership and management capacity of our grantee partners through a series of participatory workshops and trainings on a variety of topics such as fundraising, board development, financial management, and communications. Workshops and trainings typically range in length from a half-day to a series of full-day sessions, and are facilitated by technical assistance providers who tailor the trainings to the needs of the participants. Individual follow-up consultations are often conducted at the end of each series.

In addition to learning new skills and strategies for building organizational capacity, the trainings provide an excellent opportunity for grantees to share experiences, increase their knowledge base, build learning partnerships and form valuable relationships. Through these offerings, NYWF grantee partner organizations enhance their capacity, increase resources, strengthen governance practices, and ultimately improve service delivery and advocacy to low-income women and girls in New York City.

In 2012, NYWF partnered with the NYC TA Funder's Collaborative to offer grantee partners the following workshops and trainings:

Leadership Transitions: Succession Planning

Presented by Carmen Rivera, Independent Consultant

Budgeting: A Strategic Team Based Approach

Presented by Fiscal Management Associates

Political Engagement by Nonprofit Organizations

Presented by Lawyers Alliance for New York

Effective Legislative Advocacy by Nonprofit Organizations

Presented by Lawyers Alliance for New York

Proposal Writing Clinic: Writing to Influence

Presented by Community Resource Exchange

Community Organizing: The Basics

Presented by Joan Minieri, Independent Consultant

Nonprofit Fiscal Management: Follow Up

Presented by Fiscal Management Associates

Telling Our Story to Win:

2012 Strategic Communications & Media Conference

Presented by Subhash Kateel and Miriam Zolia Pérez, Independent Consultants

Maximizing Board Leadership

Presented by Community Resource Exchange

We are grateful to the Brooklyn Community Foundation, Cricket Island Foundation, New York Foundation, North Star Fund, Mertz Gilmore Foundation, Stonewall Community Foundation, Union Square Awards and United Way of New York City for their partnership in 2012.

2012 Strategic Discretionary Grants

Strategic Discretionary Grants support efforts that respond to emerging issues in accordance with The Foundation's mission, funding strategies, and capacity building priorities. The Foundation awarded \$124.175 in grants in this area to the following organizations:

A Better Balance

To support the campaign to secure paid sick days for all working New Yorkers

Brotherhood/Sisterhood Sol

To support culturally competent youth development programming for low-income youth across the City

The Community for Hispanic Children & Families

To support research and public education activities impacting Latino children and families

Common Law

To support work on housing issues affecting women and families in New York City

Domestic Worker's United

To continue public education activities on the Domestic Workers Bill of Rights

Girls for Gender Equity

To support strategic planning activities as the organization embarked on its second decade of service to promote safety and healthy development of girls

Grace Outreach

To support the Women's Financial Empowerment Series in Brooklyn in partnership with Citi and NYWF

Hispanics in Philanthropy

To support online giving challenge

Hunter College Foundation, Inc.

To support the Hunter College Public Service Scholar program

Local Development

Corporation of East New York

To support the Women's Financial Empowerment Series in Brooklyn in partnership with Citi and NYWF

Make the Road New York

To support 10th anniversary year of advancing economic security and justice for immigrant women and families

National Council for Research on Women

To support the dissemination of Child Care Report findings

New York Women's Agenda

To support pay equity public education activities

Philanthropy New York

To support roundtable discussion of Funders of Women and Girls Network

SoHarlem

To support microenterprise and workforce development activities for underemployed women in New York City

Welfare Rights Initiative

To support the training of students who have firsthand experience of poverty to promote access to education for all

Women's City Club of New York

To support the publication of the Women's City Club of New York, Inc. Resource Guide to New York City's social services

Women's Funding Network

To support capacity building programming at the WFN 2012 Annual Conference: The Power of Global Networks

Youth Empowerment Mission

To support the fashioning of walking staff awards for the 2012 New York Women's Foundation Celebrating Women's Breakfast

Thought Leadership & Educational Outreach

Gender-Based Violence Film Series – “Playground” panelists Taina Bien-Aimé and Rachel Lloyd

PUBLIC EDUCATION FILM SERIES | INITIATIVE AGAINST SEX TRAFFICKING OF MINORS | GENDER BUDGET ANALYSES

The New York Women’s Foundation raises awareness of issues critical to women through the publication and release of in-depth reports. We provide gender-based analyses of state and city government budget proposals, detailing the implications for women and families; we also reach out to the public through educational events like our film series and panel discussions and against gender-based violence.

Public Education Film Series

The NYWF **Public Education Series Against Gender-Based Violence** increases public awareness of the needs of women and girls who are victims of abuse and identifies long-term changes that are needed to eradicate gender-based violence.

In April 2012, The Foundation screened “**Crime After Crime**,” a documentary highlighting the injustices many women who are victims of intimate partner violence face in the criminal justice system. The film screening was followed by a panel discussion which featured: Sharon Richardson, a re-entry specialist at STEPS to End Family Violence; Jesenia A. Santana, Supervisor of Client Advocacy Services and Senior Policy Advisor at STEPS to End Family Violence; and Jaya Vasandani, Associate Director of the Women in Prison Project at the Correctional Association.

In October 2012, the Foundation screened “**Playground**,” a documentary on sex trafficking of minors in the United States. A panel discussion followed the screening and featured: Taina Bien-Aimé, Executive Director of the Women’s City Club of New York; Rachel Lloyd, Founder & Executive Director of Girls Educational and Mentoring Services; and Laura Simich, PhD, Director of Research at the Vera Institute of Justice.

The Foundation gratefully acknowledges the partnership of the Johnson Family Foundation, the Frank and Ruth E. Caruso Foundation, and Fork Films in making this film series possible.



Initiative Against Sex Trafficking of Minors

Alongside many of our allies and partners, The Foundation stands against sex trafficking of minors. We believe that child sex trafficking erodes the very fabric of communities and limits opportunities for our children to live full, vibrant lives. To this end, in 2012 The Foundation announced the launch of a five-year Initiative Against Sex Trafficking of Minors to establish a “zero tolerance” policy towards the sexual exploitation of minors, with specific focus on sex trafficking of minors.

Through the Initiative Against Sex Trafficking of Minors, The Foundation identifies and supports strategies that foster individual transformation, community engagement and mobilization and broad, lasting change. In so doing, this Initiative prioritizes the lives of NYC youth, strengthens efforts that eliminate the sexual exploitation of girls and transgender youth in NYC, and builds shared ground for collective action against sex trafficking of minors.

In July 2012, The Foundation released a report, *Sex Trafficking of Minors in New York: Increasing Prevention and Collective Action*, which provided an assessment of the landscape of services for trafficked youth in New York City and provides recommendations on how youth-focused and community-based approaches can prevent sex trafficking of minors and increase awareness of the issue.

In the Fall of 2012 grantmaking cycle, we awarded one-year grants ranging from \$60,000 to \$80,000 to nonprofits with demonstrated expertise in responding to the challenges faced by girls and gender non-conforming youth who are at-risk and trafficked for sex. Grants were awarded in the areas of Prevention and Early Intervention, and Policy/Advocacy.

Our 2012 Initiative Against Sex Trafficking of Minors Grantee Partners:

Arab American Family Support Center

Association of the Bar of the City of New York

Equality Now

Girls Educational and Mentoring Services (GEMS)

The Foundation gratefully acknowledges the Johnson Family Foundation’s partnership and support of the Initiative Against Sex Trafficking.

Gender Budget Analyses

In 2012, The New York Women’s Foundation, in partnership with the Fiscal Policy Institute, released a new gender budget analysis report, *The Governor’s Proposed 2012-13 New York State Budget: Continued Scarce Funding for Women, Families and Youth in a Weak Recovery*, which revealed the disproportionate burden placed on New York City’s women across racial lines in the 2012/2013 executive state budget proposal and offered specific recommendations for alternatives.

A similar report on the city budget, *The Impact of the New York City FY 2013 Executive Budget Proposal on Women, Children and Families* was also released, offering similar conclusions.

Many of the proposed budget cuts disproportionately affected single mother heads of households and women holding lower-paying jobs in the public and nonprofit sectors. Consequently, low-income women and their families were placed at even greater risk of entrenched poverty; physical, emotional and sexual violence; poor health and other factors that contribute to long-term economic stagnation.

We believe that gender budget analyses are effective tools to influence equitable distribution of public funds.

NYWF Grantee Partners: 1988 – 2012

A Better Balance	2012	Business Outreach Center Network	1998, 2004, 2005, 2006, 2007, 2010, 2011, 2012
A.C.E. – OUT, Inc.	1992, 1994, 1995, 1997/1998	CAAAY Organizing Asian Communities	1996, 1998, 1999, 2001, 2002, 2012
ACCION USA	2003, 2004, 2005, 2006, 2007, 2009, 2010, 2011, 2012	Callen-Lorde Community Health Project	2011, 2012
Action for Community Empowerment	1990, 1993	Casa Atabex Aché	2001, 2002, 2003, 2004, 2005
Adhikaar for Human Rights and Social Justice	2008, 2009, 2010, 2011, 2012	Catholic Big Sisters and Big Brothers	2005, 2006, 2007, 2008, 2009
African Hope Committee	2007, 2008, 2009, 2010, 2011	Center for Alternative Sentencing and Employment Services	2005, 2006, 2007, 2008
African Peoples Council	1995	Center for Anti-Violence Education	1989, 1992, 1996, 1997/1998, 2000
African Services Committee, Inc.	1998	Center for Family Life/ SCO Family Services	2012
Agenda for Children Tomorrow	2010, 2011	Center for Family Life in Sunset Park	2006, 2007, 2008, 2009, 2010
ALIGN	2012	Center for Immigrant Families	2002, 2003, 2004, 2005, 2006
Alonzo Daughtry Family Life Services	1994	Center for Independence of the Disabled in New York, Inc.	1996
American Indian Community House, Inc.	1994	Center for New York City Neighborhoods	2009, 2010, 2011, 2012
American Woman's Economic Development	2004	Center for the Elimination of Violence in the Family, Inc.	1988
Amethyst Women's Project	2001, 2002, 2003, 2005, 2006, 2012	Central Brooklyn Partnership	1994, 1999, 2000, 2001, 2002
Andolan Organizing South Asian Workers	2003, 2004, 2005	Central Harlem Partnership, Inc.	1996, 1997
Arab-American Family Support Center, Inc.	1995, 1997, 2000/2001, 2012	CHANGER	2009, 2010, 2011, 2012
Asian American Legal Defense and Education Fund	2005, 2006, 2007, 2008, 2009	Chhaya Community Development Corporation	2012
Association of the Bar of the City of New York	2012	Chica Luna Productions	2006, 2007, 2008, 2009
Associations From Fordham to Burnside	1993	Child Care, Inc.	2002, 2003
Astoria/Queens SHAREing and CAREing	1996	Child Welfare Organizing Project	2003, 2004, 2005, 2006, 2007
Audre Lorde Project, Inc.	2007, 2008, 2009, 2010, 2011	Chinese Staff & Workers' Association (W.E.P. & G.W.H.S. Project)	1991, 1992, 1998, 2000, 2001, 2012
Battered Women's Resource Center	2002, 2003, 2004, 2005, 2006	Cidadão Global/Global Citizen	2011, 2012
Beit Shalom	2002, 2003, 2004, 2005, 2006	Coalition for the Homeless	2003, 2005
Bethex Federal Credit Union	1998	Coalition of Battered Women's Advocates	1990, 1991, 1992
Better Bronx for Youth	1998	College and Community Fellowship	2004, 2005, 2007, 2008, 2009
Bridge the Gap Family Daycare Network	1992	Committee for Hispanic Children and Families	1991, 1997, 1999, 2000
Bronx AIDS Services	2012	Committee for Humanitarian Assistance to Iranian Refugees, Inc. (C.H.A.I.R.)	1994, 1997
Bronx Women Against Rape	1993	Community Advocates for Educational Excellence	1995
Brooklyn Workforce Innovations	2009, 2010, 2011, 2012	Community Development Project of the Urban Justice Center	2004, 2006, 2007, 2008, 2009
Brooklyn Young Mothers' Collective	2007, 2008, 2009, 2010, 2011		
Brotherhood/Sister Sol	2006, 2007, 2008, 2009, 2010		
Bruised Reed Ministry	1995		
buildOn, Inc.	2010, 2011, 2012		

Community Health Action of Staten Island	2012	Forest Hills Community House	1991, 2002, 2003, 2004, 2005
Community Voices Heard	1998, 1999, 2000, 2002, 2003, 2012	Friends of the Island Academy	2001, 2002, 2004, 2005, 2006
Community Women's Network	1993	Girls Educational & Mentoring Services	2005, 2006, 2007, 2008, 2009, 2012
Community Works	1997, 1999	Girls for Gender Equity, Inc.	2005, 2006, 2007, 2008, 2009
Concerned Citizens for Family Preservation, Inc.	2007, 2008, 2009	Girls Incorporated of New York City	1999, 2000, 2001, 2002, 2003
Coney Island United Services	1993	Girls Write Now	2012
CONNECT, Inc.	2011, 2012	Good Old Lower East Side	2008, 2009, 2010, 2011, 2012
Correctional Association of New York	2006, 2007, 2008, 2009, 2010, 2012	Grace Outreach	2010, 2011, 2012
Council of Senior Centers and Services	2012	Grameen America	2009, 2010, 2011, 2012
Cush Campus, Inc.	1994	Grand Street Settlement	2000, 2001, 2003, 2004, 2005, 2012
Cypress Hills Child Care Corporation	1994, 2002, 2008, 2009, 2010	Greenhope Services for Women, Inc.	2007, 2008, 2009, 2010, 2011
DAMAYAN Migrant Workers Association	2004, 2005, 2007, 2008, 2009	Greening of Harlem Coalition (Goddess Garden)	1993
Day One	2006, 2007, 2008, 2009, 2010	Griot Circle	2003, 2004, 2005
Dome Project, Inc./Starlings Collaboration	1999	Haitian American Women's Advocacy Network (HAWANET)	1994
Domestic Workers United	2005, 2006, 2007, 2008, 2009	Haitian Women for Haitian Refugees	1993, 1994, 1996, 2012
Dominican Women's Caucus	1996, 1997	Haitian Women's Program	1993
Dominican Women's Development Center	1990, 1993, 1998/1999, 2006, 2007	HarlemLive	2001
Dorcas Home Ministry	1992	HIV Foster Care Education and Advocacy Project	1996
Dreams Into Action	1997	HIV Law Project	1992, 1993, 2000, 2004, 2005
Dress for Success New York	1998	HIV/AIDS Technical Assistance Project	1999, 2000, 2001, 2002
Dwa Fanm	2005, 2006, 2007, 2008, 2009	Hollaback!	2012
East Brooklyn Congregations	1997	Homelessness Outreach and Prevention Project of the Urban Justice Center	2008, 2009, 2010, 2011, 2012
East River Development Alliance	2011, 2012	HOPE Program	2002, 2003, 2004
Edwin Gould Services for Children	1998	Hot Bread Kitchen	2010, 2011, 2012
El Barrio Popular Education Program	1992, 1993, 1995, 1996	Hour Children	1999, 2002, 2003, 2004, 2005, 2009, 2010, 2011, 2012
El Centro de Hospitalidad	2003, 2004, 2007, 2008, 2009	Housing + Solutions	2007, 2008, 2009, 2010, 2011
Empire State Pride Agenda Foundation	2012	Human Rights Project of the Urban Justice Center	2004
ENTRENET	1994, 1996	Hunts Point Economic Development Corporation	2011, 2012
Equality Now	2006, 2007, 2012	Ifetayo Cultural Arts Facility	2002, 2003, 2004, 2005, 2006
Esperanza del Barrio	2004, 2005, 2006, 2007, 2008	inMotion	2002
Families for Freedom	2010, 2011, 2012	Institute for Labor & the Community (Girls Project)	1998, 1999, 2001, 2002, 2004
Families United for Racial and Economic Equality	2002, 2003, 2004, 2005, 2006	Interfaith Neighbors	1994, 1997, 1998, 2001
Family Learning Circle	1996, 1997	Iris House, Inc.	1994, 1997
Family Violence Project of the Urban Justice Center	1998, 1999, 2000, 2001, 2002	Ivy League	1995, 1996
FIERCE	2007, 2008, 2009, 2010, 2011	Jacob A. Riis Neighborhood Settlement House	1999, 2000, 2011, 2012
Figure Skating in Harlem	1999, 2000, 2010, 2011, 2012	Jews for Racial and Economic Justice	2008
Fire Safety Education Fund	1999	Joint Public Affairs Committee for Older Adults	1995
First Girls Congress Collaborative	2000		
First Saturday in October	1996		

JusticeWorks Community	1995, 2007, 2008, 2009	Neighborhood Economic Development Advocacy Project	2005, 2006, 2007, 2008, 2009
Kianga House	1990	Neighborhood Self-Help By Older Persons Project, Inc.	2004, 2005, 2006
Korean American Family Service Center	1991, 1995, 1997, 1998, 2000	Networking Project for Disabled Women and Girls	1988, 1992
Korean Family Counseling & Research Center	1994	New Destiny Housing Corporation	2000, 2001, 2002, 2003, 2005
Latin American Integration Center	1995, 2005, 2006, 2007	New Settlement Apartments	2005, 2006, 2007, 2008, 2009
Latin American Women's Network (LAWN)	1995	New York Asian Women's Center, Inc.	1989, 2000, 2001, 2002, 2003
Latina Reproductive Rights Initiative	1994	New York Black Women's Health Project	1991
Latina Roundtable on Health & Reproductive Rights	1993, 1994, 1997, 1998	New York City Alliance Against Sexual Assault	2004, 2011, 2012
Learning Center for Women in Prison	2006, 2007	New York City Gay and Lesbian Anti-Violence Project	2012
Legal Information for Families Today	2011, 2012	New York City/Lesbian Health Fair Organization Committee	1996
Legal Momentum	2006, 2007, 2008, 2009, 2010	New York Civil Liberties Union Foundation	2005, 2006, 2007, 2008, 2009
Lexington Vocational Services	2011, 2012	New York Legal Assistance Group	2011, 2012
Life Force: Women Fighting Against AIDS, Inc.	1993, 2001, 2002	New York SCORES	2004, 2005, 2006, 2007, 2008
Literacy Partners	2011, 2012	Non-Traditional Employment for Women (NEW)	1989, 2000, 2001, 2002, 2003
Little Shepherd Community Services, Inc.	1995, 1998	North Brooklyn Coalition Against Family Violence	2003
Living Hope Family Day Care Network, Inc.	1989, 1995	Northwest Bronx Community and Clergy Coalition	2000, 2001, 2006, 2007, 2008, 2009
Local Development Corporation of East New York	2002, 2003, 2009, 2010, 2011, 2012	Opportunity Program for Women	1992
Looking Toward Tomorrow, Inc.	1996	Participatory Budgeting Project	2012
Love Heals, the Alison Gertz Foundation for AIDS Education	2008, 2009, 2010, 2011, 2012	ParentJobNet, Inc.	2008, 2009, 2010, 2011, 2012
Lower East Side Worker's Center/Latino Workers' Center	1994	Per Scholas	2012
Lower Eastside Girls Club	1997, 1998, 1999, 2006, 2007	Picture the Homeless	2003, 2004, 2005, 2006, 2007
Make the Road by Walking	2001, 2002, 2003, 2004, 2005	Polish-American Council for Children and Families, Inc.	1996
Make the Road New York	2009, 2010, 2011, 2012	Project Greenhope: Services for Women, Inc.	1993, 1997
Maura Clarke-Ita Ford Center (MCIF)	1995, 1996, 1997, 1999, 2000, 2001/2002	Project Harmony, Inc.	1995
Mercy Center	2000, 2001, 2002, 2004, 2005, 2010, 2011, 2012	Project Hospitality	2003, 2004
Morris Heights Health Center	1989	Project Superwoman Collaborative	2000
Mother's Love Support Network	1992	Project Teen Aid Family Services (formerly the Rose F. Kennedy Family Center)	1993, 1996, 1997, 1998, 1999
Mothers On the Move	1997, 1998, 1999, 2000, 2001	Providence House, Inc.	1998, 1999, 2001
Mothers Together	2000, 2001	Queens Women's Network	1991
Mount Sinai Sexual Assault and Violence Intervention Program	2008, 2009, 2010, 2011, 2012	Queers for Economic Justice	2007, 2008, 2009, 2010, 2011, 2012
Mujeres en Pie (Women Arise!)	1990	Rainbow Center	1995
Mujeres in Action	1992, 1994	Reap & Keep Educational Services	1993
Muslim Women's Institute for Research and Development	2005, 2006, 2007, 2008, 2009	Red Hook Initiative	2004, 2005, 2006, 2007, 2008, 2009
Narco Freedom, Inc. (Children and Families Together)	1992	Red Umbrella Project	2012
National Mobilization Against SweatShops	2002, 2003, 2010, 2011, 2012	Rena Day Care Centers, Inc./Rena FDC Network	1999, 2000, 2001
Nazareth Housing, Inc.	1995	Restaurant Opportunities Center of New York	2006, 2007, 2008, 2009, 2010

Ridgewood Bushwick Senior Citizens Council, Inc.	2004, 2005, 2006, 2007, 2008, 2009	Turning Point for Women and Families	2007, 2008, 2009, 2010, 2011
RightRides for Women's Safety	2008, 2009, 2010, 2011, 2012	Union Settlement Association	2011
Riverside Church Youth Program	2000	University Neighborhood Housing Program	1999
Row New York	2008, 2009, 2010, 2011, 2012	Upwardly Global	2009, 2010, 2011, 2012
Sadie Nash Leadership Project	2004, 2005, 2006, 2007, 2008, 2009	VAMOS Unidos	2008, 2009, 2010, 2011, 2012
Sakhi for South Asian Women	1991, 1994, 1995, 2001, 2003, 2009, 2010, 2011, 2012	Violence Intervention Program (VIP)	1990, 1993, 1995, 2000, 2010, 2011, 2012
Sanctuary for Families	1988, 2011, 2012	Voces Latinas	2008, 2009, 2010, 2011, 2012
Sauti Yetu Center for African Women	2006, 2007, 2008, 2009, 2010	Voice & Vision	1997
Service Women's Action Network	2010, 2011, 2012	Voices UnBroken	2010, 2011, 2012
Serving Our Selves (SOS)	1992	Welfare Rights Initiative	2000, 2001, 2002, 2003/2004, 2005
Sex Workers Project of the Urban Justice Center	2003, 2004, 2005, 2006, 2007	Westchester Square Partnership	2010, 2011, 2012
Shalom Task Force	1995, 1996, 1997, 2000, 2001	Women and AIDS Resource Network (WARN)	1990
Sinergia, Inc.	1993	Women and Work	2004, 2005, 2006, 2007, 2008
Sista II Sista	1999, 2000, 2001, 2002, 2003	Women for Afghan Women	2004, 2005, 2006, 2007, 2008, 2009
Sistas on the Rise	2005, 2006, 2007, 2008, 2009	Women for Economic and Educational Mobility (WEEM)	1994, 1995
Sister Outsider	2002, 2004	Women In Steel, Inc.	1995
Sisterhood Mobilized for AIDS/HIV Research and Treatment	2006, 2007, 2008, 2009, 2010	WomenCare, Inc.	1991, 1992, 1998, 1990
Society for the Preservation of Weeksville & Bedford-Stuyvesant History	1997	Women's Advocate Ministry, Inc.	1993, 1996, 1999/2000
South Asian Youth Action (SAYA!), Inc.	1998, 1999, 2000, 2001, 2002	Women's Center for Education and Career Advancement	2003, 2005, 2006, 2007, 2008, 2009
South Brooklyn Local Development Corporation	1995, 1998	Women's Health Education Project	1991, 1992, 1993
South Jamaica Services for Families and Children, Inc.	1994	Women's HIV Collaborative of New York	2006, 2007, 2008, 2009, 2010
SPARKS	2011, 2012	Women's HIV Legal Advocacy Project	1992, 1993
St. Francis Xavier's Action Youth	1995, 1996, 1998	Women's Housing and Economic Development Corporation (WHEDCo)	1999, 2003, 2006, 2007, 2008, 2009, 2010, 2011, 2012
St. Peter's Childcare Network	1991	Women's Housing Coalition	1988
St. Rita's Center	1994	Women's Information Network	2000
St. Vincent's Services	2010, 2011, 2012	Women's Justice Alliance	1994
Star of the Sea, Inc.	1993, 1995	Women's Project of the Association for Union Democracy	1992
Start Small. Think Big.	2012	Workers' AWAAZ	1998
Staten Island Teen Pregnancy Network	1993	Year Up New York	2011, 2012
STEPS to End Family Violence	1993	Young Women of Color HIV/AIDS Coalition	2007, 2008, 2009, 2010, 2011
STRIVE/East Harlem Employment Services	2011, 2012	Youth Advocacy Center	1995
Sylvia Rivera Law Project	2007, 2008, 2009, 2010, 2011	Youth At Risk, Inc. (f.k.a. New York Youth At Risk)	2000, 2001, 2002, 2003, 2004
T.O.P.S. For You, Inc.	1991, 1996, 1998	Youth Empowerment Mission	2001, 2004, 2005, 2006, 2007
Take Charge/Be Somebody Youth Network	1995	Youth Ministries for Peace & Justice	2005, 2006, 2007, 2008, 2009
TAMKEEN: The Center for Arab American Empowerment	2006, 2007, 2008, 2009, 2010	YWCA of Queens	2009, 2010, 2011, 2012
The Hetrick-Martin Institute	2012		
The POINT Community Development Center	2011, 2012		

25th Anniversary Celebrating Women Breakfast Co-Chairs
Anne E. Delaney, Anita Channapati and Robyn Brady Ince



NYWF President and CEO Ana Oliveira, 2012 Celebrating Women Award recipient Af-jen Poo, 2012 Century Award recipient former Secretary of State Hillary Clinton, 2012 Celebrating Women Award recipient Merble Reagon, and NYWF Honorary Board Chair Abigail Disney at the 25th Anniversary Celebrating Women Breakfast



Cassandra Seidenfeld Lyster and NYWF Board Vice Chair Anne E. Delaney



NYCHA Chairman Jon B. Rhea and Deputy Mayor Carol Robles-Roman



Representatives from each of NYWF's 69 grantee partners on stage at the 25th Anniversary Celebrating Women Breakfast

Abyssinian Church Choir Performance



NYWF Founders Helen LaKelly Hunt and Betty Terrell-Cruz



New York City Council Speaker Christine Quinn, former Secretary of State Hillary Rodham Clinton and NYWF Board Chair Diana Taylor



25th Anniversary Celebrating Women Breakfast 2012



NYWF grantee partner recipient speakers Karry (Row NY), Kate (Row NY), Sheena (Year Up), Brienna (Voices UnBroken), and Ebony (Hour Children)



Guests at the 25th Anniversary Celebrating Women Breakfast





NYWF Founder Ginny Day, NYWF Board Vice Chair Anne Delaney, NYWF Honorary Chair Abigail Disney, Executive Director of the Dominican Women's Development Center Rosita Romero, NYWF Director of Community Philanthropy Madeline Lamour Holder, and NYWF President & CEO Ana Oliveira



Family Reunion Co-Chairs and NYWF Board Alumnae Barbara Wynne and Judy Hall



Former NYWF Grantee Partner Ifetayo Cultural Arts Facility performing at the Family Reunion



NYWF Alumnae are recognized and celebrated at the 25th Anniversary Family Reunion



NYWF Board Alumnae Rose Pierre-Louise and Silda Palerm, 2012 Celebrating Women Award Honoree Merble Reagon, and NYWF Board Member Antoinette E. La Belle



NYWF Board Alumnae Kwanghee Kim, Katherine Kahan and Martha Bernstein



NYWF Board Alumnae Mary Carol Scott, Millie Chan, and Gail Miner



NYWF GAC member Carol Schlitt, NYWF Board Member Janet Riccio, Dale Kramer Cohen, and COS Member Anne Fosty



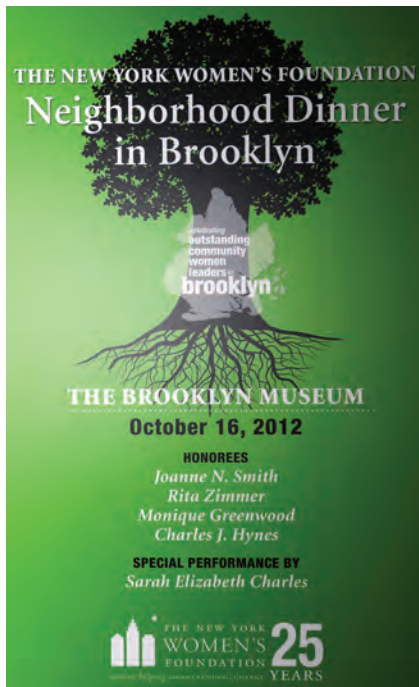
Guests at the 25th Anniversary Family Reunion



NYWF Board Member Hyatt Bass, Angelie Singla, and NYWF Board Alumnae Silda Palerm, Virginia Joffe, and Hali Lee



CFF Members Stephanie Van Damm, Brett Felder, Cinnamon Chambers-Lewis, Anita Channapati, Pamela Schiess, Jill Cantwell, and Heather Roberts



Neighborhood Dinner Honorees Joanne N. Smith, Founder & Executive Director of Girls for Gender Equity, Brooklyn District Attorney Charles J. Hynes, Rita Zimmer, Founder & Executive Director of Housing + Solutions, and Monique Greenwood, Owner of Akwaaba Bed & Breakfast Inns



Board Alumna Kwanghee Kim, Board Alumna Kathryn Weill, Theresa Galvin, and Board Member Lisa Holton



CFF Member Toya Williford and NYWF Board Member, Anita Channapati



CFF Members Jessica Klaitman and Daphne Leroy



Board Alumna Rhonda Joy McLean, Bill Bragin, and Board Alumna Sharon Myrie



NYWF supporters at the Neighborhood Dinner in Brooklyn



NYWF Volunteers, Alumnae, and friends at the Neighborhood Dinner



NYWF Board, Alumnae, Volunteers, and Staff at the Neighborhood Dinner in Brooklyn



Honoree Joanne N. Smith and Girls for Gender Equity's Staff and Board members

LE CIRQUE LUNCHEON



NYWF's annual Le Cirque event



Bonnie Strauss, NYWF Board Chair Diana Taylor and Le Cirque host and NYWF Board Member Jean Shafiroff



NYWF Board Alumna Ginny Day



Guests at NYWF's annual Le Cirque event



NYWF Board Member Sue Coté and Margaret Morrison



Jessamyn W. Rodriguez, Founder and CEO of NYWF Grantee Partner Hot Bread Kitchen and NYWF President & CEO Ana Oliveira

NYWF 2012: A LOOK BACK



NYWF Board Chair Diana Taylor, NYWF Board Member Hyatt Bass, NYWF President & CEO Ana Oliveira, 25th Anniversary Celebration performer Sarah Jones, NYWF Board Member Jean Shafiroff, 25th Anniversary Celebration award recipient Soledad O'Brien, 25th Anniversary Celebration award recipient and Board Alumna Ginny Day, and NYWF Founder Helen LaKelly Hunt



NYWF Grantee Partner recipient speaker Britnee Bryan from Love Heals, the Allison Gertz Foundation for AIDS Education



NYWF's 25th Anniversary Celebration at Alice Tully Hall



NYWF Board Alumnae with 25th Anniversary Celebration hostess Connie Chung



NYWF 25th Anniversary Celebration award recipients Soledad O'Brien and Brad Raymond with their children



Eboni Gates, Ruth Burgos, Gordon Hazel, Jennifer Davis, and 25th Anniversary Celebration hostess Connie Chung

Girls Educational and Mentoring Services (GEMS) Founder & Executive Director Rachel Lloyd, Director of Research, Vera Institute of Justice Laura Simich, Ph.D., Women's City Club of New York Executive Director and NYWF Board Member Taina Bien-Aimé, and NYWF Vice President of Programs Jacqueline Ebanks



The panel discussion moderated by Jacqueline Ebanks, NYWF Vice President of Programs featured the following experts: Laura Simich, Ph. D., Director of Research, Vera Institute of Justice; Rachel Lloyd, Founder & Executive Director, Girls Educational and Mentoring Services (GEMS); and Taina Bien-Aimé, Executive Director, Women's City Club of New York and NYWF Board Member



NYWF Board Alumna Aiyong Choi and COS Member Melinda Chu



CFF Members at the screening and panel discussion of "Playground"



Andrew Robinson and Meg Sheridan from NYWF grantee partner Grace Outreach





Seema Agnani and Sujatha Raman



Sara Bernel Henderson and Traci Callender



Daisy McCloud and Audacia Ray



NYWF President & CEO Ana Oliveira and NYWF Board Member Yvonne Moore



Mendy Kiwak, Esther Kenigberg and Beatrice Frank



Kelly Shimoda, Jennifer DaSilva, NYWF Director of Grantmaking
Kate Landon and Victoria Sammartino

GRANTEE PARTNER RECEPTION

NYWF 2012: A LOOK BACK



Jacob A. Riis Neighborhood Settlement holding their Leading Lady Brunch, in recognition of Women's History Month. Each GIRL participant invited and acknowledged a special woman in their life at the event.

YOUR GENEROSITY

Made so much possible in 2012.

Together we are
improving the lives of
women and families in
New York City.

The Foundation is exceedingly grateful to the individuals, corporations and foundations who have invested in us and New York City's women and families throughout the years and especially during the past year.

2012 was a stellar year. The Foundation awarded a record \$5,250,000 to more than 80 women-led, community-based organizations. Our Hurricane Sandy Response and Recovery Fund, set up within weeks of the storm's appearance, distributed the first installment of a four-year \$1 million dollar grant to repair storm-related damage. And, after a two-year investigation, The Foundation released its report, *Sex Trafficking of Minors in New York: Increasing Prevention and Collective Action*, and launched its five-year, \$5,000,000 Initiative Against Sex Trafficking of Minors.

Your generous support enabled us to act nimbly and swiftly, to give where and when it was most urgently needed. We value your partnership and, as we walk into the future, we thank you for helping to improve the lives of women and families, and for helping to create a safer, healthier, more economically just New York.

Donors

We are so grateful for the support and partnership from our donors. Your generosity makes it possible to create better lives for women and families in New York City.

\$100,000+

Anonymous (2)
Hyatt Bass
Bloomberg Philanthropies
Citi
Anne E. Delaney
Abigail E. Disney
Groundswell's Catalyst Fund
Agnes Gund
NoVo Foundation
Joan and Donald Sherman
Walmart

\$50,000-\$99,999

Anonymous
Ernst & Young LLP
Fifth & Pacific
Helen LaKelly Hunt &
The Sister Fund
InMaat Foundation
Margaret Munzer Loeb and
Daniel Loeb
Yvonne S. Quinn
Sullivan & Cromwell LLP
Barbara Manfrey Vogelstein
Joan M. Warburg
Women's Self-Worth Foundation

\$25,000-\$49,999

Anonymous
Lisa S. and Richard Cashin
Susan C. Coté
Ginny and Sean Day
Barbara B. Dobkin
Jack & Dorothy Kupferberg
Family Foundation
The Janet Prindle Seidler
Foundation
Jennifer and Jonathan Allan
Soros Foundation
Johnson Family Foundation
Marion S. Kaplan
Sarah Kovner
Marcia S. Kupferberg
Carolyn Buck Luce
Morgan Stanley
Morgan Stanley Foundation
Sheri Sandler
Jean and Martin Shafiroff

Alexandra Shiva and
Jonathan Marc Sherman
Diana L. Taylor
Time Warner Inc.
Wells Fargo Foundation

\$10,000-\$24,999

Anonymous (2)
American Association
of Retired Persons (AARP)
Allen & Overy
Helene R. Banks
Karen Bigman
BNP Paribas
Cablevision Systems Corporation
CBS, Inc.
Covington & Burling LLP
Joyce B. Cowin
Susan R. Cullman
Debevoise & Plimpton LLP
Fiona & Stan Druckenmiller
EmblemHealth
FactSet Research Systems, Inc.
The Frances Alexander
Foundation
Jeannie Minskoff Grant and
T Grant
Guerlain
Judith L. Hall
The Hoch 2009 Charitable
Lead Trust
Hunt Alternatives Fund
InVNT Productions
Jane L. Mali Charitable
Lead Trust
Antoinette E. La Belle
Renee Landegger
Latham & Watkins LLP
Lazard
Lori E. Lesser
Dorothy Lichtenstein
Lief Cabraser Heimann &
Bernstein, LLP
Morrison & Foerster LLP
Margaret A. Morrison and
Larry Heuer
Neuberger Berman LLC
Patterson, Belknap,
Webb & Tyler, LLP
Michele Penzer

PIMCO
Random House, Inc.
Mary Dillon Reynolds
Janet Riccio
Susanne Schnitzer
Ann Short
Simpson Thacher & Bartlett
Skadden, Arps, Slate,
Meagher & Flom, LLP
Regan A. Solmo and
Geoffrey Brewer
Sontag Management LLC
TD Bank
T&H Brokers, Inc.
Toyota
U.S. Trust Company of New York
Viacom
W Magazine
Marissa C. Wesely
White & Case LLP
Barbara and Bill Wynne

\$5,000-\$9,999

Anonymous (4)
Denise Adler
Amalgamated Bank
Loreen Arbus Foundation
The Atlantic Philanthropies
Brooke S. Beardslee
Brandt & Hochman Literary
Associates
Kwanza R. Butler
The Capital Group Companies
Dalia Cohen
Lucy Danziger
Laurel Durst
Robert Evans
Julie R. Fenster
Carol Flaton
Treacy Gaffney
Jennifer Giacobbe & Matt Gai
Anne Hess
Adria S. Hillman
Gail B. Hochman
Lisa M. Holton
Katy Homans
Hughes Hubbard & Reed LLP
Deborah and Al Jackson
Gloria Jarecki

Virginia R. Joffe
Betty C. Jones
Brenda C. Karickhoff
Robert M. Kaufman
Donna Kenton
Tracey and Seth Kupferberg
Sandra A. Lamb
Lucky Magazine
Mary McCormick
Rhonda Joy McLean
Sondra Murphy
The New York Community Trust
Camille Orme
Katheryn Patterson and
Thomas Kempner
Mahsa Pelosky
Penguin USA
Lisa L. Philp
Marnie S. Pillsbury
Samuel Goldberg & Sons
Foundation
Jean Scannell
Sara L. Schupf
Karen Sharkey
Carolyn Sicher
Silverleaf Foundation
Patricia J. Simpson
Barbara Slifka
Cornelia Small
Chandrika Tandon
Elizabeth H. Wang
Charlotte C. Weber
Marie-Helene Weill
Laura J. Wilson

\$2,500-\$4,999

Anonymous (4)
Akin Gump Strauss Hauer & Feld
Emily P. Alva
Karen Asner
Avalon Trust Company
Akira Barclay
Lisa G. Beckerman
Lori and Bret Black
Kate Bostock-Shefferman
Catholic Communal Fund
Karen Choi
Catherine M. Clarkin
Elizabeth A. Clemants

Olivia H. Cousins	Maura Bluestone	Alexandra A. Herzan	Michelle Ores	United Way of
Julie F. Cummings	Peggy Blumenthal	Tracy R. High	Carmel Owen	New York City
Joan Davidson	Merilee Bostock	Nelda Hirsh	Raquel V. Palmer	Michelle A. Vice
Vivian H. Donnelley	Shari Brink	Lisa B. Holley	Louise M. Parent	Grace L. Volckhausen
Hazel-Ann Dunbar	Laura E. Butzel	Alice Hsu	Jeannie Park and	Sukey N. Wagner
Ingrid S. Dyott	Donna H. Campbell	A.C. Hudgins	David Chan	Jessica P. Walker
Lisa Fitzig	Sarah L. Cave	Interbrand Corporation	Allison Pease	Myrle H. Wall
Beatrice S. Frank	Thippeswamy Channapati	Nancy Roosevelt Ireland	Mitzi Perdue	Sue Ann Weinberg
Arlyn S. Gardner	Kathleen Chrisman	Jill Iscol	Lisa Peterson	Jill Weinstein
Tara D. Grabel	Gina Chu	Alice Jacobs	Nancy Pfund	Betsy B. West
Marcy Grau	Melinda Chu	Sue Ann Weinberg	Margaret H. Pinto	Cynthia Young
Suhana S. Han	Anne E. Cohen	Mary E. Johnson	Ellen Polansky	Mary N. Young
Walter L. Harris	Holly D. Cole	Ann G. Jurdem	Faith Popcorn	Jane Zimny
Joyce Mertz-Gilmore	Conde Nast Publications	Rachel Kahan	Mary Purdue	
Foundation	Nan A. Cooper	Linda M. Katz	Linda E. Rappaport	\$500-\$999
Arthur Knapp and	Lorraine Cortés-Vázquez	Marilyn Katz	MaryAnne Rasmussen	Anonymous (2)
Lynn A. Roesch	Dana Cranmer	Judith Kaye	Talatha Reeves	Elizabeth Abrams
Alexandra Korry	Criterion Collection/	Jurate Kazickas	Diana W. Reid	Bellatrix A. Accola
May and Samuel Rudin	Janus Films	Anne Keating	Cynthia J. Ringo	Noreen W. Adler
Family Foundation	Louise Cullman	Kimberlee Keller	Rachel F. Robbins	Larian Angelo
Vincent McGee	Pamela J. Damsky	Jessica Klaitman	Susan M. Roberts	The Angelson Family
Clare T. McMorris	Peggy Davenport	Karen Klopp	Lynda Rodolitz	Foundation
Jennifer Nevins	Anne S. Davidson	Barbara Shattuck Kohn	Maria Teresa Rojas	Judith A. Archer
Jane B. O'Connell	Jennie L. DeScherer	M. R. Krasny	Meredith K. Rollins	Astraea Foundation
Ana L. Oliveira	Christine DiGuiseppi	Geraldine B. Laybourne	Marcella K. Rolnick	Peggy J. Bader
Amy F. Olli	John M. Dimatteo	Susan Carmel Lehrman	Rossana Rosado	Kristine Baker
Alison Overseth	Carolyn N. Dolan	Lauren Leyden	Sharon Rowlands	Julie Bauer
Silda Palerm	Jacqueline Ebanks	Patti S. Lieberman	Melissa Salten	Claire Behar
Liz Peek	Ingrid Eberly	Tracy Lovatt	Susan Sawyers	Ardra K. Belitz
Karen Proctor	EILEEN FISHER	Sharon Love	Ellen Schall	Amanda Benchley
Elizabeth Sabin	EisnerAmper LLC	Helen Lowenstein	Scholastic Trade	Alison Berke
Samson Capital	Janice R. Ellig	Roderick MacFarquhar	Publishing	Susan Bernfield
Advisors, LLC	Amy Elliott	Kerrie MacPherson	Catherine Schreiber	Martha D. Bernstein
Pam B. Schafner	Enterprise Community	Daniel Maguire	Deborah Schwartz	Sayu V. Bhojwani
Tracey Schusterman	Partners	Carolyn Malcolm	Elinor A. Seevak	Taina Bien-Aimé
Mary Carroll W. Scott	Laura Evans	H. G. Marcus	Jenny K. Selbin	Susan E. Block
Annabelle M. Selldorf	Florence Fearington	Andrea S. Markezin	Rashidah Siddiqui	Joi Y. Bourgeois
TerryLynn Smith	Jeffrey Feinman	Claire A. Marx	Denise Simon	Andrea Bozzo
Bonnie B. Strauss	Fe Fendi	Rosa Mazzone	Julie Sissman	Brenda Breslauer
Sandra S. Tully	Sarah J. Foley	Mary E. McGarry	Melissa Schiff Soros	Mary Jane Brock
Lou-Anne Walters	Janeene K. Freeman	Laura McGrath	Gillian V. Steel	Shifra Bronznick
Dee Winokur	Barbara T. Friedman	Erica Steinberger McLean	Brande Stellings	Martha H. Brooks
Suzanne Zywicki	Susan T. Fulwiler	Thomas McMahan	Elizabeth Stribling	Gloria Primm Brown
	Catherine T. Gatto-Harding	Milbank, Tweed,	Elizabeth Strickler	Nancy D. Browne
	GE Foundation	Hadley & McCloy	Susannah Taylor and	Anthea H. Bruffee
	Mary Ellen Geisser	Nadine Mirchandani	Phil Marriott	Dana Buchman
	Laura Gewitz	Katherine Modena	Ann Temkin	Miriam Buhl
	Wendy Goldberg	Mary P. Moran	Ruth Thomas Suh	Rose Burke
	Goldman, Sachs & Co.	Abigail Y. Moses	Judith R. Thoyer	Virginia L. Butters
	Katie Grover	Jeanne M. Mosure	Tiger Baron	Brenda S. Butzel
	Dionne Gumbs	Janet Mulligan	Foundation, Inc	Marjorie A. Cadogan
	Lisa Gustavson	Myron Studner	Nikki Tippins	Cynthia Cannell Cross
	Wes Guylay	Foundation, Inc.	Laurie M. Tisch	Helen V. Cantwell
	Kikka Hanazawa	Elizabeth Allen Nash	Marjorie B. Tiven	Susannah Carrier
	Suni Harford	Janet A. Nelson	Barbara & Donald Tober	Dale M. Cendali
	Peter Hatch	Susan Noonan	UBS Financial	Jessica Chalifoux
	Ryan Hawke	Jeanne J. O'Brien-Ebiri	Services, Inc	Anita Channapati

Ellen J. Chesler	Aisha S. Haque	Johanna Markson	Margarita Rosa	Susan G. Webman
Aiyoung Choi	Izumi Hara	Mona Marquardt	Esther Rosenberg	Kathryn Weill
Sarah E. Cogan	Lana Harbor	Catie Marshall	Jennifer Rowland	Sharon J. Weinberg
Cook Pine LLC	Harry N. Abrams	Maribeth Martorana	Aidan D. Rowley	Inez S. Weinstein
Ellen B. Corenswet	Hilary Hatch	Tracie Martyn	Rudin Management	Cindy M. Weissblatt
Elizabeth Costas	Susan Hendel	Camille Massey	Co. Inc.	Beth N. Werwaiss
Katherine M.	Mary Beth Henson	Deborah H. McManus	Melinda Sarafa	Diane M. Whitty
Crawford-Gray	Anne D. Herrmann	Grainne McNamara	Rosemarie Savino	Kamy Wicoff
Patrick Cremens	Sylvia A. Hewlett	Teri S. Meissner	Jill Schlesinger	Martha L. Wiggins
Patricia Crown	Marian H. Hoffman	Elizabeth Meyer	Judith G. Schlosser	Melinda B. Wolfe
Scott Cullather	Mariana Hogan	Meredith Meyer	Laura Schranz	Randi Zinn
Louis B. & Dorothy	Kathryn Holleran	Nancy Meyer	Nancy Schwartz	
Cullman Foundation	Hour Children	Patricia Meyer	Rose H. Schwartz	\$250-\$499
Y. Stacey Cumberbatch	Antoinette Hum	Jennifer Milacci	Marguerite Scocimara	Anonymous (5)
James Cummings	Natalie Jaros	Donna Milrod	Betsey Selkowitz	Maureen Abell
Anupam Damani	Yael H. Jekogian	Nandini Mini	Karen Seymour	Elaine S. Abelson
Mary Beth Daniel	Etsuko F. Jennings	Elba I. Montalvo	Sneha Shah	Michael C. Adams
Sara M. Darehshori	Courtney D. Johnson	Ann S. Moore	Lorraine W. Shanley	Humera Afridi
Tuhina De O'Connor	Janice M. Johnson	Yvonne Moore	Kathleen C. Sharkey	Susan Ainsworth
Stephanie Denkwowicz	Leslie Jones	Twinkle Morgan-	Loretta Shaw-Lorello	Cheryl Akawie
Vishakha N. Desai	Rochelle D. Jones	McDonald	Kathleen K. Shea	Jean S. Albert
DeSantis Breindel, Inc.	Burton R. Kassell	Stacia Murphy	Marnim Short	Lena Alhousseini
Janet L. Dewar	Kassell Family	Kathleen Murray	Mary M. Shuford	All Stars Project Inc
Pamela Dicient	Foundation	Sharon A. Myrie	Silver Lake	Valerie Amsterdam
Maureen Dillon	Ellen Kaye	Sarah Najarian	Hildy J. Simmons	Candice Anderson
Donna Dolan	Elaine Kessel	Sarah Nathan	Pat Sloan	Lisa Anderson
Cynthia Drakerman	Kwanghee Kim	Gail B. Nayowith	Tarnisha L.	Carole Angermeir
Natalie Edwards	Marian L. King	Esther Newberg	Smart-Santiago	Arab-American Family
Abigail Ehrlich	Lauren E. Klein	Susan Newton	Camilla Smith	Support Project
Edward Enniful	Betsy Koffman	Teresa O	Celeste Smith	Audre Bagnall
Karen Fairbanks	Jamie L. Kogan	Carolyn Okabe	Melissa P. Sobel	Martha Baker
Rachel Feddersen	Nidhi Kohli	Courtney Oliver	Pam Solo	Susan Bard
Andrea K. Feirstein	Judith Kramer	Stephanie Olmsted	Martha S. Sproule	Susan Barile
Celia Felscher	Krause Family	Open Society Foundation	Ellen C. Stein	Laurie Barkhorn
Lucia Ferreira	Foundation, Inc.	Oppenheim Family Fund	Margaret A. Stern	Frances M. Barrett
Ruth Finkelstein	Annie P. Lazar	Paula K. Oppenheim	Marisa D. Stevanas	Rachael Barrett
Elizabeth A. Fitzwater	Carol Levitt	Susan E. Orchant	Susan Straub	Lilliam Barrios-Paoli
Roopa M. Foley	Ariel Levy	Carol Oreskovic	Rosalind Strong	Hilary Beall
Julie Fontaine	Lorie C. Levy	Stephanie Oster	Margaret Subhas	Megan Beck
Anne M. Fosty	Elvis Lewis	Carol J. Ott	Jane Summers	Kathryn Beckwith
Vanessa M. Franklin	Cynthia Lien	Maura Pally	Kim Suttell	Laurie Berke-Weiss
Stacey Friedman	Susan B. Lindenauer	Penguin USA	Eva Talel	Emily M. Bernstein
Barbara R. Gai	Jo LoCicero	Juliana Pereira	Richard E. Talmadge	Karen Binder-Brynes
Nancy Gallt	Sioux Logan	Matthew Perlman	Alexandra K. Taylor	Cynthia Bittenfield
Brennan Gang	Yvonne Look	Ann M. Petach	Rosa A. Testani	Martin Blank
Stacey Gargiulo	Helen T. Lowe	Gloria C. Phares	Cristin Tierney	John D. Blondel
Cecilia M. Gastón	Barbara Lowry	Theresa M. Plant	Myra L. Tobin	Esther Bloustein
Kate Gellert	Cassandra Lozano	Christina Ramelli	Grace Torres	Anne Board
Martha E. Gifford	Patricia P. Lunka	Audrey A. Rampinelli	Janet E. Truncate	Dana Bober
Jamie N. Gordon	Mary M. Luria	Nancy L. Raybin	Barbara J. Turk	Carole Bolger
Penny Grant	Christiane MacArthur	Joyce A. Riccio	Cheryl Van Hooven	Kelly V. Bookmyer
Annette Green	Macquarie Group	Arva R. Rice	Alexandra Van Schie	Dan-Xia Bossard
Rose Gregorio	Foundation	Denise Richards	Cynthia K. Vance	Jessica Brackman
Ashley Gregory	Marjorie Magner	Julia Ritchie	Virginia VanZanten	Reisa Brafman
Teresa M. Grimm	Eileen Makoff	Barbara B. Roberts	Celia Verrier	Emily Brizzi
Karen L. Hagberg	Jeanette Mall	Kathleen Romagnano	Debra Walton	Kathleen Brookbanks
Tammy Hamzhepour	Carole Mallement		Lara Warner	

Jennifer K Brown	Catherine J. Douglass	Foundation	Sophie Kimm	Janice McGuire
Muriel R. Brown	Chloe L. Drew	Daryl Hartshorne	Susan M. Kingsolver	Theresa McKenna
Joanne Brumberg	Derreth Duncan	Vilia Hayes	Marla Klinger	Melissa Meredith
Chickie Bucco	Karen L. Durbin	The Hearst Corporation	Nicole Koch	Robin Merle
Lisa Bullard	Gouri O. Edlich	Jessica Hecht	Korean American	Daphna H. Mitchell
Christine Burke	Marsha (Nicky) M. Edlich	Kymsha Henry	Family Service Center	Evelien Moes
Mary L. Burton	Anne Erni	Teresa M. Heuser	Susan Kramer	Jacqueline Mondros
Cathy S. Callender	Richard Farley	Katharine W. Hill	Nancy Krawitz	Moody's Corporation
J. Scott Cameron	Patricia A. Farrell	Marjorie Hill	Dale Kurland	Wendy L. Moonan
Jane T. Campbell	Jane Farver	Maria L. Hinojosa	Gabrielle L. Kurlander	Kiisha Morrow
Leah Campbell	Claudia Fauber	Nicole Hinton	Tyson Kybota	Caroline Moses
Jill Cantwell	Anna Fee	Melissa P. Hirsch	Michael Labson	Maria Mottola-Loonam
Carolyn Carter	Brett E. Felder	Carol Hochman	Caitlin LaCroix	Elizabeth A. Mullins
Cara Casciari	Naomi Fertitta	Mary Hoeveler	Eve Landau	Amanda Muros-Bishoff
Center for Children's	Lori B. Fineman	Brandon Holley	Landsdale Associates	Carolyn J. Murray
Initiatives	Eileen Finn	Carol N. Holley	Amanda Langlois	Nicole Nahas
Ann F. Chamberlain	Karina Fitzpatrick	Housing Plus	Cathy Lanier	Cherrie Nanninga
Mildred Chan	Shawn G. Flowers	Solutions, Inc	Hali Lee	Alejandra Naranjo
Whitney Chatterjee	Sherette A. Flowers	Elise Howard	Lisa Lee	Nathalie Narciso
Sunita K. Chaudhuri	Samantha Franklin	Idelle A. Howitt	Nadine Lee	National Urban League
Melissa Chernofsky	Myra L. Freed	Suzanne C. Hoyt	Francine LeFrak	Brenda Neal
JuWon Choi	Mary Ann Fribourg	Antoinette Hum	Joy Leonard	Constance H. Neel
Ulrika E. Citron	Merle Froschl	Human & Civil Rights	Daphne M. Leroy	Sheila Nemazee
Judy Clare	Lisa Galione	Organization	Linda Levine	Leeanne Neri
Mayree Clark	Lee W. Galvis	Alice C. Hunsberger	Cathy I. Levy	Beverly Neufeld
Michael E. Clark	Emily B. Gannett	Carmela Iaria	Donna Levy	New Settlement
Cecilia Clarke	Mary Gannon	Tamara R. Igel	Katherine Lewis	Apartments
Dianne Coffino	Amy Gash	Gabriella Illyes	Donna E. Lieberman	New York Asian
Cathleen Cogswell	Tonya Gayle	Robyn Brady Ince	Carol B. Liebman	Women's Center
Audra Cohen	Robin C. Gelburd	Fumihiko S. Ishigaki	Lara Litton	Dorena Newton
Barbara Cohen	Philippa G. Gerard	Melissa Ix	Loews Corporation	Bichnga Nguyen
Carrie H. Cohen	Carolyn Gero	Christal M. Jackson	Linda Loffredo	Amberine Niagree
Gregory Cohen	Rachel Gerstein	Tanya M. Jaeger	Lauren L. Logan	Barbara Nichols
Rhea A. Cohen	Barbara F. Gibbs	Nurah-Rosalie P. Jeter	Sonia J. Lopez	Barbara Niederkofler
Alisa Cohn	Jennifer Gilmore	Jewish Communal Fund	Sharon Lorenzo	Jasmine Nielsen
Madeline Cohn	Lauren Giordani	M. J. Jingo	Beth Lowy	Faustina Nischk
Jan M. Cook	Kathleen M. Giordano	Serene Jones	Wendy J. Lubin	Adaee Nwachuku
Lizzie Cooper	Françoise Girard	Montine Jordan	Gina Ma	Samantha Oddi
Cathy A. Cramer	Joan S. Glatman	JPMorganChase	Ilene Mack	Erin O'donnell
Alison Bryan Crowell	Esin Goknar	Jill Kafka	Elizabeth Mackey	Caroline K. Oh
Georgina Cullman	Ann E. Goldberg	Katherine S. Kahan	Nichol Macmanus	Catharine W. O'Rourke
Jocelyn Cunningham	Carolyn Goodfriend	Jacqueline A. Kaiko	The Mailman	Kate Ottino
Abbey Darer	Ellen M. Goodwin	Bruce Kaiser	Foundation, Inc	Shawn Outler
Pauline David	Taa Grays	Cecily Kaiser	Linda Maiocco	Sandra Ovando
Christina Davis	Joan S. Green	Lisbeth Kaiser	Amy Malpass Hahn	Jennifer Parkinson
Alice De Callatay	Loren W. Greene	Tana E. Kamine	Joy Marks	Lorena M. Parrish
Niki DeCou	Holly A. Greenwald	Roma Kaundal	Maybel Marte	Anne B. Parson
Tara DeCoursey	Elisabeth Grennon	Franciose Kauzya	Stacy J. Martin	Jane Parver
Lea Degirmenci	Joanna Grillo	Eileen Kelly	Renee Martinez	Marlie Pattilo
Debra DeNicola	Stacey Guardino	Maureen C. Kelly	Michele A. Matice	Rebecca Pearce
Linda Descano	Sarah G. Gund	Noreen Kelly-Najah	Susan Matz	Denise L. Pease
Christine Deska	Lisa Haas	Sharon C. Kennedy	Lexy Mayers	Helen Peele
Ann C. Diamond	Antoinette Hamilton	Arlene Kestenbaum-	Loretta McCarthy	Virginia S. Perrette
Susan Diamond	Birgitta Hanan	Buckley	Celeste McCauley	Tamia Perry
Margaret diZerega	Jessie Harlin	Liz Kiernan	Frances McCusker	Robert Pesce
Becky Donahue	The John A. Hartford	Sunny Kim	Eleanor McGee	Linda Phebus
		Connie Kim-Farina		

Karen A. Phillips	Cassandra Seidenfeld	Duane Wall	Mary P. Archer	Fay Chiang
Gloria L. Pitagorsky	Lyster	Marcia Wallace	Chitra Arunasalam	Faye Chiu
Paulette Pitman	Mary J. Sentner	Sidi Wang	Martina F. Aufiero	Lis Chun
Hope Porly	Elizabeth P. Serebransky	Sandra Warren	Eileen Auld	Lisa E. Cleary
Bonnie Potter	Marcie L. Setlow	Judith Wasserman	Howard Axel	Margaret D. Clemons
Poonam Prasad	Ellen S. Shafer	Wendy E. Weil	Pamela R. Babb	Sharon Cohen
The Prudential Foundation	Angelly Shahani	Janet Weinberg	Susan Babcock	Comunilife
Diana Quick	Lindsay D. Shea	Susan E. Weiner	Carmel Balan	Sylvia J. Conley
Pearl Rabinowitz	Clayton Shedd	Vera V. Weintraub	Lara Banks	Beth Cooper Benjamin
Julia Radice	Barbara S. Sherman	Julie Weiss	Yetta Banks	Deneen Cooper
Emily K. Rafferty	Catherine Shimony	Karyn Weiss	Barbara Barbanell	Stefan Cornelis
Yulian Ramos	Wendy Sidewater	Kathleen M. Wells	Riana Barksdale	Kelley Correia
Alexander Rappaport	Cindy Silverman	Denise C. Welsh	Capricci Barush	Sarah Costa
Joan Rappaport Rosenfeld	Patricia Simon	Gretchen G. Whitman	Linda G. Basch	Susan F. Cowart
Christine Ratnam	Denise Smith	Megan Whitman	Edward P. Bass	Cynthia W. Crowley
Maureen Rayhill	Judith Smith	Wikler & Company, Inc.	Ellie Berger	Amera Crowman
Jodi Reamer	Marilyn Sneiderman	Janet Wikler	Cassandra Bethel	Hayley Dahle
Susan C. Rebell	Joshua Solomon	Gwynne A. Wilcox	Nikki A. Bethel-Grant	Julia M. Dalton
Lata Reddy	Diane Solway	Caroline Williams	Craig Bienstock	JoAnne Davidson
Gail Hunt Reeke	Sujatha A. Srinivasan	Carolyn Williams	Nicole Bigar	Andrea Davis
Julie Rems	Ann Beth Stebbins	Harriette Williams	Priscilla Bijur	Antoinette Davis
Connie Ress	Laura S. Steinberger	Hilary Williams	Loren M. Black	Jennifer Davis
John B. Rhea	Patricia M. Stevenson	Nancy Williams	Ellen H. Blais	Minal P. Davis
Corinne H. Rieder	Giselle Stolper	Marie C. Wilson	Stephanie Blake	Whitney Day
Heidi Riegler	Mary A. Strandell	Amanda Wiltshire-Craigne	Karina Bobeck	Gabriella De Ferrari
Margaret Riley	Elizabeth Stubenbord	Debra Witkin	Stephanie Bonan	Sarah Decker
Leslie Rioux	Barbara A. Sullivan	Judith S. Wolff	Daryl Boren	Milena Dedorore
Catherine Robertson	Patricia F. Sullivan	Nadine Wolfson	Sharon Bowen	Elizabeth Dehaas
Irma E. Rodriguez	Angela Sun	Suhui Won	Kate Bradbury	Elousie Dellit
Roseann M. Rodriguez	Jordan Tamagni	Jane Wright	Betsy P. Britton	Claudia A. DeMonte
Tracey Rogers	Linda Tarry-Chard	Sheena L. Wright	Regina Bronson	James Dendler
Diane Rollins	Lynda Tepperman	Nancy Wysocki	Bronx Aids Services, Inc.	Kelly DiBlasi
Carly Romeo	Aleksandra Terzano	Patty Yaghmaei	Jennifer P. Brown	Andrea Dinamarco
Lee Roper-Batker	The Lester Fund	Rina Young	Ronna Brown	Peter E. Dixon-Moses
Lori Rosello	Theatre Venture, Inc.	Catherine Zimmerman	Susan Brown	Tamara Dluzhevskiy
Carly Rosenberg	Toby Thompkins	Martin Zubatkin	Linda L. Bryant	Paulina do Amaral
Claire Rosenzweig	LaSonya Thompson		Gretchen Buchenholz	Courtney E. Dolan
Cheri Rothman	Kathy Thornton-Bias	\$100-\$249	Jolynda Burton	Debra Dorfman
Rosina F. Rue	Juhu Thukral	Anonymous (6)	Sally T. Butler	Brendan P. Doyle
Sheereen M. Russell	Colleen Tierney	Natalie Abatemarco	Maureen Callahan	Jennifer Driscoll
Vincenza Russo	My Chi To	Sarah Abelow	Elizabeth C. Campbell	Josie Duckett-Boyd
Itala T. Rutter	Katherine Todrys	Cindy Abramson	Folasade Campbell	Monica Duda
Elizabeth A. Sackler	Bonnie L. Torcivia	Katherine Acey	Corinne C. Capolino	Mindy Duitz
Ann Marie Salmon	Lisa M. Tormino	Robert Acton	Nancy Carin	Kelleigh Dulany
Ann S. Sand	Sherice Torres	Sharon Adler	Amy Carroll	Suzy E. Edelstein
Nan M. Sandle	Georgia C. Traill-Stimphil	AIG	Kristy Caylor	Jill Eisenhard
Indhira Santana	Robert L. Tucker	Monica Albano	Kara Cesare	Karen Ellis
Ann M. Sarnoff	Rossie Turman	Colette Alderson	CFF Funds	Elaine Epstein
Melissa Sawyer	Stephanie van Damm	Victor Alia	Stefanie Chachru	Patricia Evert
Elisabeth Scharlatt	Abigail Van Straaten	Deborah Allen	Karen Chaikin	Teresa Fabi
Barbara A. Schatz	Josefina Vazquez	Courtney Allison	Cinnamon	Khadija Fajry Antognelli
Pamela Z. Schiess	Deborah Velazquez	Laurie Alsup	Chambers-Lewis	Mary Faldich
Susan Schor	Verrazano Closing Services LLC	Susan Alt	Jessica Chandnani	Gretchen M. Farrell
Francine Schore	Elizabeth Von Ziegesar	American Indian Community House	Maisie Chang	Amy Feinstein
Lynn C. Schulman	Judith N. Vredenburgh	Bernadette Anderson	Saraswathi Channapati	Sanna B. Feirstein
Phyllis R. Schwartz	Adele R. Wailand	Roseanne Antonucci	Maro Chermayeff	Joy Fernandez
			Su Chermayeff	Martha M. Ferry

Leslie Findlen	Alison R. Hanstead	KLB Development, LLC	Alyson C. McCarthy	Susan M. Pappajohn
Beth Finkel	Gay Hartigan	Eileen R. Kleiman	Jacquelyn C. McConville	Kerstin Park-Labela
Sarah A. Finklea	Dana Hartman	Kathleen Klock	Jane McCord	Joan Parrott-Fonseca
Diane Finnerty	Kaitlin Hassett	Sonya Kolba	Mary D. Mcevoy	Sharon Patrick
Elizabeth Fishman	Helaine Hausner	Nancy Kolben	Molly McGrath	Paula Pelosi
Jean Fleischhacker	Catherine Havemeyer	Karen B. Konigsberg	The McGraw-Hill Companies	Gail Pesyna
Dawn Florence	Mary Haviland	Nina Kontos	Janice McGuire	Clare K. Pierce
Bettye Forbes	Mary Hedahl	Jacque M. Kouyoumjian	Nina F. Mcintyre	Rosemonde Pierre-Louis
Risha Foulkes	Erica Heinz	Jamie Kramer	Joan A. McKay	Denise Pines
Carole France	Kate Heller	Rain Kramer	Sabra McKenzie- Hamilton	Daphne Pinkerson
Caroline Frank	Kerin Hempel	Robin Krause	Julie Mckeown	Steve Plump
Margaret Frank	Kelli Herd	Thomas Krever	Julia McNamara	Florence D. Polikoff
Ester Fuchs	Yaz Hernandez	Karen Kupferberg	Patricia B. McNamara	Dionne H. Polite
Tannis Fussell	Kathy Herre	Suzanne Kupiec	Debra Means-West	Gabriella Polur
Brooke Gadasi	Lisa Hines-Johnson	Natasha Labovitz	Susan A. Meisel	Desma Polydorou
Susan L. Gannon	Alison Hirsch	Melinda K. Lackey	Janis Menken	Sara B. Potter
Adrienne V. Garcia	Estelle Hochman	Valyrie Laedlein	Heidi Meyers	Emily P. Quinlan
Fran Gau	Ida Hoghooghi	Carolyn Lanchner	Gertrude Michelson	Alice Quinn
Karen Geer	Rebecca J. Holden	Vanessa Landau	Rosanne Migliorino	Caren Rabbino
Karen A. Gerber	Caroline Holl	Susan Landon	Linda Mills	Naomi Rabinowitz
Christine Geronimo	Janice Holzman	Amy Lane	Sydney W. Miner	Neila Radin
Marsha Gewirtzman	Karen Hope	Jane Larkworthy	Margaret M. Minson	Seetha Ramanathan
Setareh Ghotbzadeh	Sylvia Hordosch	Patricia Lazak	Melanie Mintz	Elena Ranguelova
Sharon Gigante	Annie Horsfall	Brigitte LeBlanc-Lapointe	Bhakti Mirchandani	Luna Ranjit
Edes P. Gilbert	Mary A. Hughes	Carol F. Lee	Delores Mitchell	Vasantha Rao
Barbara Gillers	Jamie Hughey	Khalilah Legrand	Elena Miteva	Natasha Reed
Patricia Gillespie	Erica Hunt	Susan W. Leicher	Kim Molstre	Susan Reid
Tracey Gilliam	Leah Hunt-Hendrix	Kathleen A. Leo	Jacklyn S. Monk	Karen Reynolds
Judith Ginsburg	Cynthia Ingoglia	Ellen Lesof	Margaret Montgomery	Terri Rhymes-Lowery
Laura Giovacco	Evelyne Izeogu	Alexandra Levin	Naw D. Moo	Jessie Rigaud
Girls Incorporated	Jennifer Jackson	Francine D. Levine	Hazel Moore	Cynthia Riugo
Christina Giwa	Janet R. Jakobsen	Judy Levine	Margaret Morrera	Aidine L. Rivera
Jean C. Godfrey-June	Aloysee H. Jarmoszuk	Renee Lewis	Moscow 57 LLC	Julia Robbins
Goldglit & Company LLP	Blamo Jaurey-Briggs	Lena Licata	Theresa B. Moser	Julia Roberts
Alice H. Goldman	Liv Johanson	Mimi L. Lieber	Sarah Mullin	Carol Robles-Roman
Caryl Goldsmith	Gregory L. Johnson	Diane Lifton	Debora Mulrain	Celeste K. Rodgers
Robin K. Goldstein	Hillary H. Johnson	Leisle Lin	Rita Murray	Jessamyn Rodriguez
Irene Gomez Gasteasoro	Laura Johnson	Suzanne A. Little	Kathryn Murtagh	Rebecca Rooney
Lucia H. Gordon	Kathleen Jones	Dee Livingston	Susan Mustacato	Meryl Rosen
Yvette Gorman-Holmes	Cathy Kaplan	Sara Lopergolo	Heather J. Myers	Jill Rosenberg
Sara K. Gould	Teresa S. Karamanos	Elaine Louie	Ann Nasary	Jaime Rosenfeld
Dawne M. Grannum	Leela Kasturi	Alexander Lynn	Jill Nathanson	Nicola Rosenstock
Brenda Grasse	Ellen Kaye	Shirin Malkani	Marilyn Ng-A-Qui	Helen K. Rosenthal
Catherine S. Gratton	Maral Kazanjian	Geraldine P. Mannion	Robina Niaz	Joan L. Roth
Irene Graulich	Allyn Keiser	Monika Mantilla	Eileen Niedzwiecki	Angelina Rouse
Lisa Green	Marcia Keizs	Carrie Marker	Erika Niwa	Joan Ruby
Katherine Greenberg	Nancy Kestenbaum	Melissa Mark-Viverito	David Nocenti	Kirza Sanchez
Daryn A. Grossman	Dalita Keumurian	Gabrielle Marshall	Fiona O'Doherty	Flora L. Sanders
Christine H. Grumm	Fern J. Khan	Nadia Martincic	Suzanne O'Donohue	Lani Santo
Susan Guerrero	Rachna Khosla-Lazard	Nicole Mason	Lance Ogiste	James Sargent
Lisa Hageman	Alice Kim	Jane Y. Mathews	Jessica Oliff	Reshma M. Saujani
LaShann Hall	Gina Kim	Diana Mattson	Karla Oliver	Catherine Saxton
Susan F. Hall	Joon Kim	Kathleen Maurer	Catherine Orenstein	Elizabeth R. Schnee
Rosemary Halligan	Teresa H. Kim	Charalambos	Michele Ozumba	Susan W. Schneider
Elizabeth L. Hamburg	Dai Sil Kim-Gibson	Mavromichalis	Anka Palitz	Pamela Schoenfeld
A. M. Hames	Cynthia King	Debra A. Mayer		Marie Schwartz
Stacey Hammer	Emily J. Kirwan	Patti Mazzarella		Nancy J. Scorcias

Melissa Scott	Susan E. Wefald	Carolyn Blair	Anne Dana	Rita Goldstein
Sandra L. Scott	Elana J. Weinstein	Donna Blanchard	Judith Daniel-George	Shulamith K. Goldstein
Yokasta Segura	Nancy A. Weiss	Cecelia Block	Judith Daniels	Debbie Goodelman
Nancy Sellar	Merida Welles	Nicole Blum	Mary Sue Daniels	Katie Goodspeed
Fatima Shama	Heather Weneck	Jane Bock	Kavita Das	Lila Gordem
Anne Shapiro	Colleen Wenke	Sara Booth	Rena Dascal	Coy Gordon
Elizabeth N. Shapiro	Laurel West	Justin Brancato	Andrea C. Davila	Ann Marie Gothard
Ruby Sharme	Carin S. Whint	Julie Brandfield	Danielle De Cerbo	Ann Graham
Larry Sharpe	Nic White	Sara S. Brandston	Taylor Deborah	Alexandra Gray
Leslie Ava Shaw	Naomi Wiesen	Carleson M. Brandt	Jean H. DeWolfe	Annette Green
Jessica Sheehan	Meredith Williams	Yvonne M. Brathwaite	Deborah Dimasi	Cynthia Greenberg
Susanne Short	Leslyn Williams-Mitchell	Donna Bray	Trinh D. Doan	Alexandra E. Greif
Claire A. Simon	Amy S. Winkelman	Emma Brenner-Melin	Beatrice Doyle	Mary Grendell
Lorraine Skeen	Caroline Wolff	Gabrielle L. Brown	Emily Drake	Elizabeth Guernsey
Kenyatta Skyles	Wannetta Worthy	Maya Brown	Selby Drummond	Monica Guevara
Jaye Bea Smalley	Therese M. Wyman	Shannon Brunette	Tiffany Dufu	Yekaterina Gusin
Jean M. Smith	Marsha Yarde	Sarah Bruno	David Earle	C. H.
Joanne Smith	Kyung B. Yoon	Antonia Bryan	Alexander R. Edlich	Staci Haines
Catherine A. Sohn	Yuri Yoshizawa	Clarisse A. Bucag	Latoyce Edwards	Morgan Hall
Martha L. Spanninger	Andy Young	Karen Buck	Lily Egan	Joan F. Halligan-Wang
Kristin Sprang	Wendy Yun	Mark Buhrmester	Lee Eiferman	Victoria Hall-Palerm
Sejal Srinivasan	Alice Yurke	Brian Bulger	Jennifer Elwart	Claire Handleman
Susan Stacher	Michelle Zemor	Melba Butler	Susan Emanuel	Aretha Hankinson
Dina S. Staple	Judy Zibetta	Antonella Calarota	Camille Emeagwali	Margot Harley
Deborah Starr		Dorothea Caldwell-Brown	Michelle Ester	Ayo Harrington
Kathleen Stephansen	\$1-\$99	Jamie Camhi	Sonia Estreich	Fedrecia Hartley
STEPS to End	Anonymous (6)	Nina Candia	Clarisse Fall	Katherine Harvey
Family Violence	Shawn Aaron	Erica Cardwell	Anan Favour	Sara Hashim
Patricia C. Stewart	Penny Abeywardena	Anna Carran	Kimberly C. Felder	Salima Hassan
Mary A. Stokinger	Cordelia Abrokwah	Causecast Foundation	Fajah Ferrer	Tera Hatler
Helen D. Stone	Milagros Acosta	I Chambers	Connie Fishman	Shawn A. Hegele
Sarah Stranahan	Jeanette Adams	Yoon Chang	Tesa Fitzgerald	Michelle Henry
Ann F. Sullivan	Tawana Adams	Kevin Chappell	Regina Q. Fitzpatrick	Lois Herr
Patricia Swann	Seema Agnani	Joseph Chehebar	Carla Fleischer	Rhina L. Herrera
Zena Tamler	Myrna Alleyne	Kim Cheney	Angela Fong	Rachel Heslowitz
Lisa M. Tanzi	Concepción R. Alvar	Fannie K. Cheng	Kim Ford	Kimberly Hicks
Lita D. Taracido	Arthur Anderson	Leithia Cheperdak	Christina Foxley	Karen Hickson
Carolyn Taylor	Ekua Ansah-Samuels	Autumn Cherrington	Jennifer Fuller	Fay D. Hill
Felicia Taylor	Lauren Ascher	Tina Chiu	Latressa Fulton	Ann W. Hilliard
Marceline Tempesta	Marion Atiru	Erin L. Chrystowski	Julia Gabella	Madeline L. and
Jane Terker	Sau F. Au	Stephanie E. Clark	Patricia Galeotti	David Holder
Alice Thurston	Alexandra Bach	Michelle R. Clayman	Katherine Gallo	Peggy E. Holder-Jones
Helen A. Thurston	Darlene Bains	Barbara Connolly	Amy Garawitz	Erin Holloway
Fran K. Ticktin	Jessica Barak	Kaylin Connolly	Stephanie Garrison	Hot Bread Kitchen
Time Inc.	Donna Barkman	Ashley Consigeio	Lauren A. Gee	Lisa Hsia
Time To Give Back	Tracy Bechtel	Elizabeth J. Cooper	Marjorie A. Geiger	Christine Hung
Pauline Toole	Margot Becker	Vivian Cortes	Sandra R. Geller	Lauren Hurst
Victoria Torrie-Capan	Stephanie Becker	Carla Crawford	A.G. Gerritsen	Afsana Hye
Carol Turnage	Bryna Beckler-Knoll	Maya Crawford	Patricia Giacobbe	Jennifer Ian
Matthew Tye	Julie B. Behuniak	Molly Crossin	Laurie Gittlitz	Nelly Isaacson
Margaret Tyre	Clare Bell	Diana T. Cruz	Adrienne Glasser	Tracy L. Jackson
Michele Urvater	Andrew Bender	Paula Cyhan	Wendy Glickstein	Beverley E. James
Carol Van Atten	Avis Berman	Celeste Dado	Adrienne Goering	Kevin James
Nisha Varia	Jill Berrero	Cherie Dado	Miles Goff	Leticia James
Deborah Velaquez	Ana Bhagwati	Emily Dake	Sarah Gold	Bryna Jekogian
Alexandra Villano	Lori Bilker	Tricia L. Daley	Karen Goldberg	Danielle Jesudowich
Judy Wasserman	Amy Bisnu	Bettina Damiani	Elaine R. Goldman	Charlotte Jette

Yolanda B. Jimenez	Linda Louie	Carolyn M. Naughton	Milagros Santiago-Liebmann	Jessica Stokes
Carine Jocelyn	Wanda Lucibello	Jenny Needleman	Sonali Sanyal	Lisa Stone
Melissa Johnson	Mario Lugay	Odetta Nemes	Wendy Sarasohn	Mary Stone
Sheila Johnson	Patricia Lunke	Network for Good	Martha Sarno	Pandora Strasler
Rebecca M. Jones Sterling	Abbey Lustgarten	New York Life	Sophie Sawyers	Brooke T. Suhler
Jamie Joseph	Barbara L. Lyle	Mary Nichols	Patricia Schaeffer	Aminah Sulayman
Mary Beth Joyce-Brown	Nora MacDonald	Norma J. Niehoff-Emerson	Cherie Schaible	Andrea Sullivan
Leah Kagan	Antoinette Machiaverna	Carol Noblitt	Talia Schank	Natalie Sullivan
Merle D. Kailas	Sharon S. Mack	Anum Nyako	Sandra Scharf	Melanie Sutherland
Sadia Kalarn	Hilary Madoux	Edward Odom	Elizabeth Scharpf	Kim Sweet
Hildy Karp	Lauren Mallenbaum	Alexandra Oliveira	Lucy Schmeidler	Ulviyya Syed
Sharon Katz	Jhovelis Manana	Rob Ornstein	Eileen Schneider	Nena Tahil
Caroline S. Keating	Julie H. Manco	Tracy Otis	Rebecca Schranz	Nancy Taylor
Debra R. Keenan	Kristine Manoulcian	Kathleen I. Ott	Debra L. Schultz	Kellie Terry
Meghan Keenan	Gara Marinoff	Meredith Paley	Joy S. Schwartz	Glennnda Testone
Sarah K. Khan	Jennifer Mario	Karen Palmer	Irene Selver	Anna Thompson
Jane Kim	Annette Marion	Shachi Pandey	Natalia Senatore	Candice Thompson
Sarah Kim	Lisa Marsh	Alexandra Parker	Sarah B. Severance	Camille Tirona
Annetta J. Kimball	Barbara Marshall	Deborah Parker	Maleri Sevier	Danielle Traub
Minde King	Lourdes Marsico	James A. Parrott	Mary Sexton	Tamara Tripp
Robert L. King	Karla Martinez	Dweynie E. Paul	Suemyra Shah	Truist
Antoinette Klatzky	Jorge Masdeu	Holly Pavlika	Sophie Shao	Tasha Tucker
Jody Klein	Deborah Mason	Amumaya Phatate	Ava Shapiro	Eve Turow
Shelby Knox	Karol A. Mason	Kellie Phelan	Khadijah Sharif-Drinkard	Norma Uriguen
Juli Kobayashi	Marlie Massena-Pattillo	Allegra Pincus	Angela M. Sharkey	Kristin S. Valentine
Elizabeth Kocienda	Shiny Mathew	Kimberly Pittman	Veda Sherman	Mavis Vann
Allison Kolani	Susan J. Matloff-Nieves	Pamela Plate	Soo Hyong Shin	Volha Veramcheck
Catherine Koller	Marcella Maxwell	Betty Popper	Desmond Shirley	Monica C. Vitoria
Barbara Kolsun	Daisy McCloud	Valeta Prendergast	Katherine B. Shutkin	Malin von Euler-Hogan
Habiba Koroma Moleon	Jacquelyn D. McLeod	Lara Price	Cally Siderias	Dawn S. Walker
Amanda Kost	Talleah McMahan	Cydney Pullman	Natasha Sigmund	Frances Walker
Sherrill Kratenstein	Emily Melchior	Nan Puryear	Riva Silverman	Helen Walper
Amanda Kraus	Anna Melnikova	Margeret Pyle	Sneed Simone	Florence Washington
Mona B. Kreaden	Aubrey Menard	Anna Raginskaya	Diane Simons	Geraldine F. Watson
Rena Krumholz	Zenaida Mendez	Francesca Raimond	Carla Singer	Susan A. Waxenberg
Gayle Kussan	Alison Menkes	Cheryl Rathbun	Joy Sisisky	Brittany Weaver
Sarah Kwak	Diana Merenda	Leslie Rennis	Suzanne Smeaton	Tracey Webb
Jana La Sorte	Eileen O. Michael	Carter Reynolds	Allison Smith	Jo M. Weiss
Maureen Lane	Celia Michaels-Evans	Beverly Rhoden	Amanda Smith	Rebecca Welch
Danielle Latimer	Juanice Mickles	Erica Richmond	Annette K. Smith	Lucy West
Kimberly Lavrie	Mary Miller	Diana Richter	Jacqueline Smith	Shawn White
Lynn K. Law	Joyce H. Mims	Maggie Riggs	Janis Smith	Pamela Wilkie
Danielle E. LeBlanc	Tuelo Minah	Lucia Rivieccio	Rhonda C. Smith	Dana Williams
Lillian Lebron	Anne P. Mintz	Julia W. Roberts	Lydia Snape	Louise M. Williams
Stacy Leibs	Denise M. Miranda	Cherry B. Robins	Santa Soriano-Vasquez	Quintell Williams
Laura Lemle	Joanna Molloy	Constance K. Robinson	Gail Spangenberg	Kaitlin F. Wong
Eva Lemmer	Claudette Monsier	Jessica Rodgers	Patricia Sparks	Susan Woods
Laura Leni	Sean Moriarty	Daniela A. Roebuck	Katy Spencer	Nelly Xavier
Larry Levine	Ariel Moritz	Rosita M. Romero	Martha S. Staniford	Liran Yechiel
Barbara V. Levy	Libby A. Moroff	Alessandra Rose	Ann Stanley	Jacqueline Yecies
Connie Lewin	Jessica Morris	Patricia Rubin	Ellsworth G. Stanton	Lindsay Zahradka
Wendy Lin	Amelia Moser	Yvonne Saavedra Linub	Barbara Steed	Ellen Zaltzberg
Winnie Liu	Chi Nga Mui	Judith Sam	Cynthia Steele	Betsy Zeidman
Tasheem L. Lomax	Shannon Mullins	Victoria Sammartino	Susan Stellin	Alina Zemor
Quayenorte	Sallye Murphy	Vanessa Sanchez	Deborah P. Sterling	Maya R. Ziv
Epin Long	David Nathanson		Mary K. Sterling	
Theresa Loong				

Volunteers

With gratitude to our volunteers who make our work possible.

Je'Anna Acevedo-Moseslogan
Nefertari Adams
Margaret Barrientos
Jeneba Bangura
Patricia Beauvais
Caroline Black
Kelly Black
Tamara Bretan
Maya Burgos
Lara Carnazza
Vera Cava
Amy Chen
Elizabeth Cho
Kaylin Connolly
Jennifer Culbert
Melissa Curmi
Antoinette Davis
Vanessa Dawson
Helen Delahaye
Lucas Dixon
Johanna Dyer
Sandra Edmond
Rebecca Emmanuel
Geneva Farrow
Shelly Fatzinger
Fabienne Francois
Sheena Foster
Kim Gardner
Danielle Gamady
Electra Goodluck
Queen Golder
Erica Goldberg
Nady Gustave
Shakila Hamidi
Alexis Harbour
Karla Herrera
Rhina Herrera
Adrienne Himmelberger
Don Horn
Sophia James
Katherine Jennings
Haja Kakay
Lisbeth Kaiser
Ayoola Kellyer
Grace Kim

Nina Kim
Ashley Kramer
Karen Kuo
Jana La Sorte
Alyssa Lees
Keisha Lemon
Jacqueline Lemon-Denton
Valentina Lodola
Naomi Litowitz
Nicole Mandel
Laruen Mallenbaum
Sandra Mangroo
Allison Menkes
Jaunice Mickles
Michelle Miklus
Yolaine Milfort
Delores Mitchels
Mahroo Moshari
Shannon Mullins
Nadia Murray
Jennifer Namour
Taureen Newland
Araceli Noriega
Marion Ntiru
Adaeze Nwachuku
Oyinade Osisanya
Rhonda Otten
Dweynie Paul
Alden Pasquarelli
Michaelle Pierre
Elda Pinchinat
Dawn Philip
Althelia Pond
Jessica Radow
Seetha Ramanathan
Daralyn Ramey
Yogmattie Rampersaud
Linda Redding
Daniela Roebuck
Jessica Percha
Kathleen Pequeno
Lauren Phipps
Lisa Pertier
Monique Reuben
Evelyn Reyes

Morgan Richardson
Michelle Riley
Heather Roberts
Ruth Rosales
Vanessa Sanchez
Kalvin Sanders
Dana Schneider
Bagriela Sevc
Rashidah Siddiqui
Terrie Simmons
Andrea Singletary
Jacqueline Smith
Sonya Spann
Sarah Spicer
Christelle St Macary
Malcolm Staso
Paulette Stewart
Amanda St. James
Nicole Taylor
Marsha Tepper
Tatiana Theophile
Alfreda Thompson
LaSonya Thompson
Yvette Vanterpool
Olya Vermachuk
Florence Washington
Louise Williams
Bhamini Vaidialingam
Cynthia Wachter
Rodney Washington
Jeanette Waters
Susan Woods
Wanetta Worthy
Shawn White
Kimberly Wynn
Jing Wu
Angelina Yan
Tiara Youmans
Andrienne Young
Regina Zhong
Dawn Zimniak
Olivia Zralka
Angela Zou

Interns 2012

Rozie Cejovic
Leila Gordon
Hadia Sheerazi
Maha Mahmoud
Terica Mannette
Ellen Pizzuto
Candace Pond
Anjali Rai
Jacqueline Schornstein
Emily Wynne

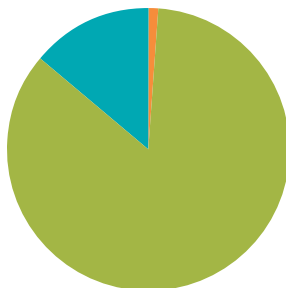
Summarized Financial Statements

STATEMENTS OF ACTIVITIES

Year Ended December 31, 2012 with Comparative Totals for 2011

YEAR ENDED DECEMBER 31

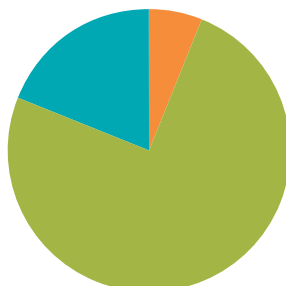
	2012			2011	
	Unrestricted	Temporarily Restricted	Permanently Restricted	Total	Total
Support and revenue:					
Contributions & grants	\$ 951,593	\$16,635,813	-	\$17,587,406	\$ 3,301,023
Special events	2,980,490	-	-	2,980,490	1,911,691
Donated goods and services	150,092	-	-	150,092	229,103
Investment income (losses), net	451,571	186,519	-	638,090	(91,909)
Other income	268	-	-	268	111,680
Net assets released from restrictions	5,212,428	(5,212,428)	-	0	0
Total support and revenue	9,746,442	11,609,904	-	21,356,346	5,461,588
Expenses:					
Grants, research, public education & leadership development	7,008,479	-	-	7,008,479	5,463,542
Administration	563,191	-	-	563,191	902,216
Fundraising	1,753,888	-	-	1,753,888	1,407,620
Total expenses	9,325,558	-	-	9,325,558	7,773,378
Change in net assets	420,884	11,609,904	-	12,030,788	(2,311,790)
Net assets – January 1	6,334,091	810,307	\$1,799,595	8,943,993	11,255,783
Net assets – December 31	\$6,754,975	\$12,420,211	\$1,799,595	\$20,974,781	\$ 8,943,993



Sources of Revenue*

85%	● Contributions & Grants	\$17,587,406
14%	● Special Events	\$2,980,490
1%	● Donated Goods & Services	\$150,092

* excludes \$638,090 Net Realized and Unrealized gains on investments and \$268 of other income



Expenditures

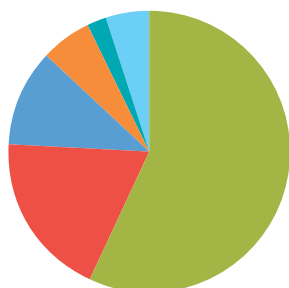
75%	● Programs	\$7,008,479
19%	● Fundraising	\$1,753,888
6%	● Administration	\$563,191

Summarized Financial Statements

STATEMENTS OF FINANCIAL POSITION

As of December 31, 2012, and 2011

ASSETS	2012	2011
Cash and cash equivalents	\$ 3,676,863	\$ 3,299,131
Investments	7,348,040	7,277,203
Pledges receivable, net	12,335,248	875,889
Prepaid expenses	86,466	58,331
Property and equipment, net	223,222	188,187
Other assets	142,820	178,056
	\$23,812,659	\$11,876,797
LIABILITIES AND NET ASSETS		
Accounts payable and accrued expenses	\$ 216,507	\$ 130,919
Grants payable	2,305,500	2,746,885
Deferred rent liability	84,346	-
Deferred contribution revenue	231,525	55,000
Total liabilities	2,837,878	2,932,804
Net assets:		
Unrestricted:		
Current	1,028,950	773,336
Board designated endowment	5,726,025	5,560,755
Total unrestricted	6,754,975	6,334,091
Temporarily restricted	12,420,211	810,307
Permanently restricted	1,799,595	1,799,595
Total net assets	20,974,781	8,943,993
	\$23,812,659	\$11,876,797



2012 Grantmaking

57%	● Economic Security	\$2,980,625
19%	● Anti-Violence & Safety	\$1,015,000
11%	● Health, Sexual Rights & Reproductive Justice	\$ 595,000
6%	● Capacity Building	\$ 288,000
2%	● Strategic Discretionary	\$ 124,175
5%	● Hurricane Sandy Response and Recovery Fund	\$ 250,000
Total Grants		\$5,252,800

The financial statements for years ending December 31, 2012 and 2011 were audited by EisnerAmper LLP. The statements presented here are summarized from our audited statements. To obtain a copy of them, please call The New York Women's Foundation at 212.514.6993.

With Appreciation

We would like to thank our strategic allies who have partnered with The Foundation over the past year.

Donna Aceto
A+ Letter Service, Inc.
Anne Fontaine
Norma Abbene
The Abyssinian Baptist Church
Cathedral Choir
Big Duck
Patrick Bryant
Center for Research & Policy
in the Public Interest
Sarah Elizabeth Charles
Chico Bags
Steven R. Berger
Chris Crum Consulting Group
Christine DiGuiseppi Design
Cliff Bar
Dale Kramer Cohen
Paula Cyhan
Department for the Aging (DFTA)
Dj Eliot
Dyn-o-mite Promotions, Inc.
Eight Square, Inc.
Eisner Amper LLP
EmblemHealth
Event Journal, Inc.
Fifth and Pacific Foundation
Finch College Alumnae
Association Foundation
Fiscal Policy Institute
Fork Films

Frank and Ruth E. Caruso Foundation
Ebony Gates
Setareh Ghotbzadeh
Goldman Sachs' Community TeamWorks
Ed Greer
Griffinwilliams Critical Point Management
Ann Hirsch
Henri Bendel New York
Hitchcock Printing
Hunter College Public Service
Scholar Program
Ifetayo Cultural Arts Academy
Inez Weinstein Special Events, Inc.
Kim Jasmin
Joan Jedell/The Hampton Sheet
Jessie Smith Noyes Foundation
Jewish Foundation for Education of Women
Jewish Women's Foundation of New York
Sarah Jones
Ellen Kaye/Moscow 57
Lansdale Associates
Latham & Watkins
Le Cirque
Lilly Ledbetter
Log-On Computer & Mailing Services
LUCKY Magazine
LUNAFEST
Valerie Lyons
Marriott Marquis
Morgan Stanley's Global Volunteer Month

Cynthia Myers
Neuberger Berman LLP
Beverly Neufeld
The New York Community Trust
The New York Women's Agenda
Overland Entertainment
Pace University
Karen Palmer
Paper Jam
LaTrella R. Penny
Philanthropy New York
Plum Alley.co
Prasad Consulting & Research
Restaurant Associates
Carol Robles-Román, Deputy Mayor
Myra Rosenbaum
Salsa
Andrea Battista Schlessinger
Fran Schumer
Sine Audio, Inc.
Skie Saulnier
Sullivan & Cromwell LLP
Tangent Graphics
Time Warner
W Magazine
Walmart Foundation
Weil, Gotshal & Manges LLP
Wines from Baja
Women's Funding Network
Youth Empowerment Mission
Zodiac Technology

The Staff of The New York Women's Foundation



NYWF Committees

We are grateful for the support and partnership of our Committees who make the work of The Foundation possible.

Circle of Sisters for Social Change

Twana Adams
Nefertari Adams
C. Nana-Oye Addo-Yobo
Bernadette Anderson
Janeba Bangura
Akira Barclay
Catherine Barnett
Maxine Best
Karen Bigman
Cynthia Brown
Lorin Brown
Myrna Caban
Cinnamon Chambers-Lewis
Melinda Chu
Lybra Clemons
Jan Myers Cook
Deneen Cooper
Antoinette Davis
Minal Patel Davis
Elena Drakos
Monique Edwards
Julie Fenster
Elizabeth Fitzwater
Sheena Foster
Janeene Freeman
Eboni Gates
Tonya Gayle
Delana Glenn
Madhu Goel
Queen Golder
Elecktra Goodluck
Nady Gustave
Michelle Henry
Karla Herrera
Gail Hochman
Geneva Humdy
Shelia Johnson
Debra Keenan
Yvonne Kenney
Nidhi Kholi
Kawana King
Jessica Klaitman
Habiba Koroma-Moleon
Deana Lawson
Daphne Leroy
Sandra Mangroo
Andrea Maxi
Cheryle E. McCloud

Mireille Menard
Yolaine Milfort
Kiisha Morrow
Sarah Najarian
Jennifer Namour
Taureen Newlan
Alma Nugent
Jeanne O'Brien-Ebiri
Lola O. Oguntunde
Courtney Oliver
Stephanie Phelps
Elda Pinchinat
Fatima Rahmati
Susanne Ramirez de Arellano
Sherry Robinson
Lynda Rodolitz
Daniela Roebuck
Rosemarie Savino
Carol Schlitt
Dana Schneider
Hadia Sheerazi
Rashidah Siddiqui
Kenyatta Skyles
Tarnisha Smart-Santiago
Sonya Spann
Debra Starr
Nicole Taylor
Aleksandra Terzano
Magalie Theodore
LaSonya Thompson
Linh Tran
Yvette Vanterpool
Lou-Anne Walters
Paulette Walters
Jeanette Waters
Sandra Watson
Alexandra Wilson
Wanetta Worthy
Marsha Yarde

Committee for the Future CO-CHAIRS

Brett Felder
Lisbeth Kaiser
Pamela Schiess
Stephanie VanDamm
Megan Whitman

Shab Aghajani
Magda Alliacin
Leyla Ballantyne
Catie Lynn Becht
Carlene Benz
Carolyn Blair
Jill Cantwell
Cinnamon Chambers-Lewis
Hayley Dahle
Minal Patel Davis
Elise Ferer
Sarah Finklea
Joanna Filgueiras
Stephanie Garrison
Kathleen Marie Giordano
Rachel Gerstein
Dawne Marie Grannum
Dalinda Guerrero
Jessica Hall
Rachel Heslowitz
Rebecca Holden
Xian Horn
Jaclyn Jablowski
Charlotte Jette
Liz Kiernan
Andrea Kim
Alana Leviton
Lauren Leyden
Lena Licata
Alison Menkes
Samantha Moore
Areti Moustakis
Barbara Niederkofler
Cassie Perlman
Allegra Pincus
Katherine Read
Celeste Rivera
Heather Roberts
Sanyal Sonaly
Tasha Tucker
Jinny VanZanten
Liran Yechiel

Corporate Leadership Committee

CO-CHAIRS
Alice Hsu
Karen Reynolds Sharkey

Sarah Cave
Karen Choi
Cara Fleisher
Jennifer Giacobbe
Antoinette Hamilton
Elene Karanicolos
Maura Kugler-Vasilescu
Linda Maiocco
Nadia Martincic
Maribeth Martorana
Suzanne O'Donohue
Tracey Schusterman
Ann Short
TerryLynn Smith
Diana Solash
Rachel Yemini

2012 Grants Advisory Committee

Kathleen Agaton
Roseanne Antonucci
Carly Benkov
Karen Bigman
Alison Bird
Lori Black
Lorin Brown
Maura Bluestone
Peggy Blumenthal
Maya Burgos
LaVera Butler
Corinne Capolino
Maggie Castro
Fannie Chan-Jarvis
Alexandra Cheryian
Sehee Chung
Carrie Cohen
Katherine Crawford-Gray
Rori Crosson
Jennifer Davis
Amanda Dillon
Amy Feldman
Samantha Franklin
Anne Frosty
Shruti Garg

Tonya Gayle
Rachel Gerstein
Lauren Giordani
Stacy Gordon
Pamela Pryor Grays
Rita Hanes
Kate Hansen
Ryan Hawke
Susan Hendel
Michelle Henry
Robin Brady Ince
Emelia Ingersoll
Michi Jigarjian
Emily Kessler
Nidhi Kohli
Nina Kontos
Dale Kurland
Dee Livingston
Harriet Lessel
Adriana Londono
Theresa Loong
Linda Maiocco
Carolyn Rossip Malcolm
Giulia Marchiori
Nachel Mathoda
Robyn Mazur
Juliana Merola
Madelaine Miller
Yvonne Moore
Elizabeth Nash
Diana Ortiz
Mandy Osborne
Laurel Parker West
Juliana Pereira
Dawn Philip
Ellen Polansky
Danielle Pulliam
Christine Ratnam
Michelle Reist
Kristen Ruff
Carol Schlitt
Tracey Schusterman
Hadia Sheerazi
Hana Sun
Liz Wainstock
Kathryn Weill
Kathryn Williams
Kaitlyn Falk Wong

INVEST in
FAMILIES

THE NEW YORK
WOMEN'S
FOUNDATION

39 Broadway, 23rd Floor, New York, NY 10006 212-514-6993

www.nywf.org



www.facebook.com/NewYorkWomensFoundation



twitter.com/NYWomensFdn